

**TOURIST ACCOMMODATION AUSTRALIA**

EMBARGO: 11.30AM (CANBERRA TIME) FRI 30 JAN 2004

C O N T E N T S

	<i>page</i>
Notes	2
Summary of findings	3
List of tables	7

ADDITIONAL INFORMATION

Explanatory Notes	41
Appendix 1: Break in time series	44
Appendix 2: Factor tables	48
Glossary	64

I N Q U I R I E S

- For further information about these and related statistics, contact the National Information and Referral Service on 1300 135 070 or Transport and Tourism Business Statistics Centre on Brisbane (07) 3222 6185.

NOTES

FORTHCOMING ISSUES

<i>ISSUE (Quarter)</i>	<i>RELEASE DATE</i>
December 2003	22 April 2004
March 2004	8 July 2004



INTRODUCTION

This publication presents results from the quarterly Survey of Tourist Accommodation (STA). The scope of the regular, annual STA includes hotels, motels and guest houses and serviced apartments with 15 or more rooms.

For the four quarters of 2003 the scope of the STA has been expanded to include:

- holiday flats, units and houses of letting entities with 15 or more rooms or units
- caravan parks with 40 or more powered sites
- visitor hostels with 25 or more bed spaces.

HOTELS, MOTELS AND GUEST HOUSES AND SERVICED APARTMENTS

DATA QUALITY IMPROVEMENTS

In the June quarter 2003 the ABS identified 132 hotels, motels and guest houses and serviced apartments which had been operating for a number of quarters but were not on the STA frame. These additional establishments were included in the STA from the June quarter 2003.

BREAK IN TIME SERIES

The addition of the 132 tourism establishments resulted in a break in time series between the March and June quarters 2003. The impact of the break in time series is explained in Appendix 1. Particular care needs to be taken when calculating percentage changes between the June quarter 2003 and previous quarters.

HOLIDAY FLATS, UNITS AND HOUSES, CARAVAN PARKS AND VISITOR HOSTELS

The ABS has collected data for holiday flats, units and houses, caravan parks and visitor hostels for the September quarter 2003. These data will be released along with June and December quarters 2003 after December quarter 2003 data has been collected and processed.

Dennis Trewin
Australian Statistician

SUMMARY OF FINDINGS

BREAK IN TIME SERIES

The addition of 132 tourism establishments has resulted in a break in time series between the March and June quarters 2003. The impact of the break in time series is explained in Appendix 1.

Particular care needs to be taken when calculating percentage changes between the June quarter 2003 and previous quarters. Where appropriate the effect of the break is taken into account in the analysis below.

SEASONALLY ADJUSTED AND TREND

SEPT QTR SEASONALLY ADJUSTED AND TREND KEY FIGURES(a), Hotels, motels and guest houses and serviced apartments—Australia

	Sep qtr 2002	Jun qtr 2003	Sep qtr 2003
Seasonally adjusted			
Room occupancy rate (%)	58.4	58.0	60.9
Takings from accommodation (\$'000)	1 205 862	1 265 081	1 336 156
Trend			
Room occupancy rate (%)	58.6	59.2	59.8
Takings from accommodation (\$'000)	1 215 790	1 290 631	1 312 334

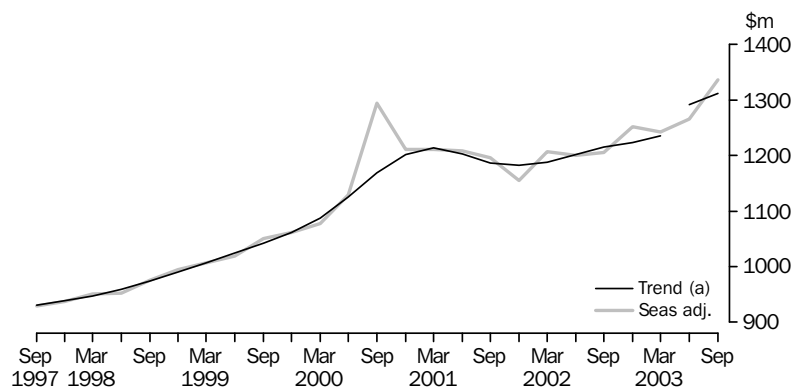
(a) Break in time series between the March and June quarters 2003. See Appendix 1 for details.

Accommodation takings

The trend estimate of the total accommodation takings for hotels, motels and guest houses and serviced apartments combined was \$1,312.3 million in the September quarter 2003. The trend estimate rose 1.7% in September quarter 2003 compared with June quarter 2003.

The seasonally adjusted estimate of the total accommodation takings rose by 5.6% in September quarter 2003, to \$1,336.2 million.

ACCOMMODATION TAKINGS (a), SEASONALLY ADJUSTED AND TREND—AUSTRALIA



(a) Break in time series between the March and June quarters 2003. See Appendix 1 for details.

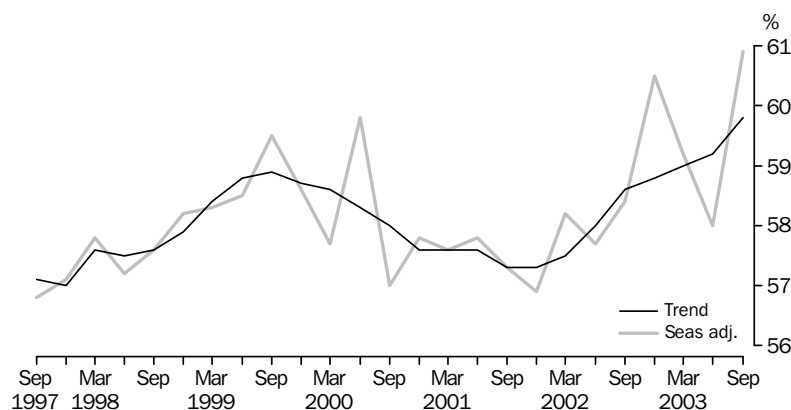
Room occupancy rate

The room occupancy rate, being derived from number of rooms and number of nights occupied, is not subject to a break in series. This is explained in Appendix 1.

SUMMARY OF FINDINGS *continued*

Room occupancy rate
continued

ROOM OCCUPANCY RATE (a), SEASONALLY ADJUSTED AND TREND—AUSTRALIA



(a) Room occupancy rates are not subject to a break in series.

The trend estimate of the room occupancy rate for hotels, motels and guest houses and serviced apartments combined rose 0.6 percentage points from 59.2% in June quarter 2003 to 59.8% in September quarter 2003. The trend estimate has recorded seven consecutive quarters of growth.

The seasonally adjusted estimate of the room occupancy rate rose by 2.9 percentage points in September quarter 2003, to 60.9%.

ORIGINAL

SEPTEMBER QUARTER ORIGINAL KEY FIGURES, AUSTRALIA (a)

	Sep qtr 2002	Jun qtr 2003	Sep qtr 2003
Hotels			
Guest rooms (no.)	77 603	78 089	77 914
Room nights occupied ('000)	4 469.9	4 109.4	4 810.0
Room occupancy rate (%)	62.7	57.8	67.1
Takings from accommodation (\$'000)	609 027	553 849	664 512
Takings per room night occupied (\$)	136.3	134.8	138.2
Motels and guest houses			
Guest rooms (no.)	83 592	85 148	85 198
Room nights occupied ('000)	4 152.8	3 954.8	4 356.4
Room occupancy rate (%)	54.0	51.1	55.6
Takings from accommodation (\$'000)	371 657	351 004	399 637
Takings per room night occupied (\$)	89.5	88.8	91.7
Serviced apartments			
Guest rooms (no.)	35 610	39 182	39 921
Room nights occupied ('000)	2 155.7	2 119.6	2 492.2
Room occupancy rate (%)	65.9	59.4	68.3
Takings from accommodation (\$'000)	256 186	254 647	309 339
Takings per room night occupied (\$)	118.8	120.1	124.1
Total			
Guest rooms (no.)	196 805	202 419	203 033
Room nights occupied ('000)	10 778.4	10 183.8	11 658.1
Room occupancy rate (%)	59.6	55.3	62.5
Takings from accommodation (\$'000)	1 236 869	1 159 500	1 373 488
Takings per room night occupied (\$)	114.8	113.9	117.8

(a) Break in time series between the March and June quarters 2003. See Appendix 1 for details.

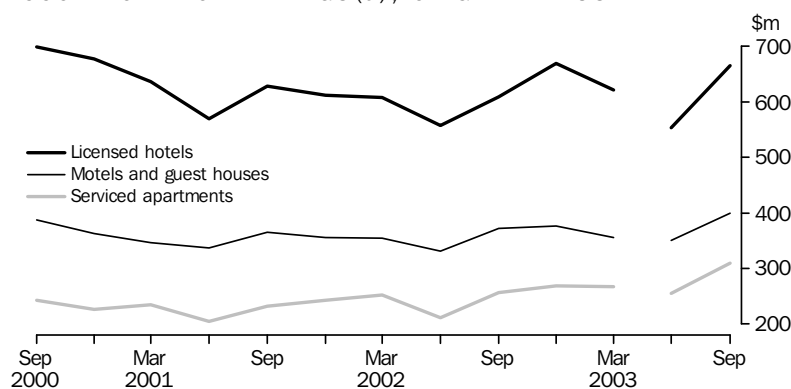
SUMMARY OF FINDINGS *continued*

Accommodation takings

In September quarter 2003, accommodation takings for hotels, motels and guest houses and serviced apartments combined were \$1,373.5 million. This was an increase of 18.5% (\$214.0 million) from June quarter 2003.

Hotels contributed \$664.5 million (48.4%) to accommodation takings. Takings per room night occupied in the September quarter 2003 were highest for hotels at \$138.15.

ACCOMMODATION TAKINGS (a), ORIGINAL—AUSTRALIA



(a) Break in time series between the March and June quarters 2003. See Appendix 1 for details.

The contributions of accommodation takings in the September quarter 2003 for hotels, motels and guest houses and serviced apartments combined were highest in New South Wales (33.5%) and Queensland (28.6%) and lowest in Tasmania (1.8%).

Room nights occupied

Total room nights occupied were 11.7 million in September quarter 2003 for hotels, motels and guest houses and serviced apartments combined. Room nights occupied increased by 14.5% (1.5 million) from June quarter 2003 to September quarter 2003.

Of the total, hotels contributed 4.8 million (41.3%) while motels and guest houses contributed 4.4 million (37.4%). Serviced apartments had the lowest room nights occupied at 2.5 million (21.4%) room nights.

Room occupancy rate

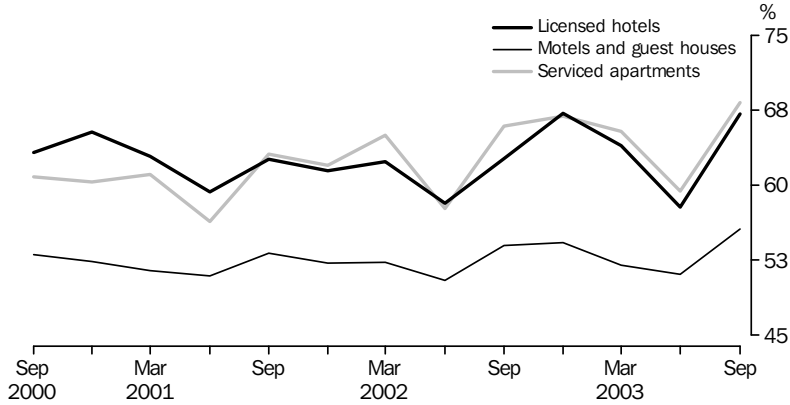
The room occupancy rate for hotels, motels and guest houses and serviced apartments combined was 62.5% in September quarter 2003 compared with 55.3% in June quarter 2003. This was an increase of 7.2 percentage points. Hotels recorded the largest increase in room occupancy rates at 9.3 percentage points.

Northern Territory and Queensland recorded increases in room occupancy rates above the national average for hotels, motels and guest houses and serviced apartments combined. Tasmania was the only state/territory to record a decrease.

SUMMARY OF FINDINGS *continued*

Room occupancy rate
continued

ROOM OCCUPANCY RATES (a), ORIGINAL—AUSTRALIA



(a) Room occupancy rates are not subject to a break in series.

LIST OF TABLES

page

HOTELS, MOTELS AND GUEST HOUSES AND SERVICED APARTMENTS

ORIGINAL, SEASONALLY ADJUSTED AND TREND

1 Australia	9
--------------------	---

SUMMARY

2 Australia	10
--------------------	----

STAR GRADING

3 Australia	12
4 New South Wales	14
5 Victoria	16
6 Queensland	18
7 South Australia	20
8 Western Australia	22
9 Tasmania	24
10 Northern Territory	26
11 Australian Capital Territory	28

TOURISM REGIONS

12 New South Wales	30
13 Victoria	32
14 Queensland	34
15 South Australia	36
16 Western Australia	38
17 Tasmania	39
18 Northern Territory and Australian Capital Territory	40

Period	ORIGINAL		SEASONALLY ADJUSTED		TREND	
	Room occupancy rate	Takings from accommodation(a)	Room occupancy rate	Takings from accommodation(a)	Room occupancy rate	Takings from accommodation(a)
	%	\$'000	%	\$'000	%	\$'000
2000						
March Quarter	58.2	1 088 317	57.7	1 077 104	58.6	1 086 994
June Quarter	57.1	1 039 478	59.8	1 128 913	58.3	1 124 984
September Quarter	58.4	1 330 113	57.0	1 294 241	58.0	1 169 179
December Quarter	58.8	1 267 090	57.8	1 210 463	57.6	1 201 000
2001						
March Quarter	57.7	1 218 107	57.6	1 211 214	57.6	1 213 589
June Quarter	55.2	1 111 337	57.8	1 208 849	57.6	1 203 645
September Quarter	58.7	1 226 522	57.3	1 195 773	57.3	1 187 152
December Quarter	57.6	1 209 554	56.9	1 155 760	57.3	1 181 892
2002						
March Quarter	58.6	1 213 991	58.2	1 207 251	57.5	1 187 782
June Quarter	54.8	1 100 074	57.7	1 199 659	58.0	1 200 847
September Quarter	59.6	1 236 869	58.4	1 205 862	58.6	1 215 790
December Quarter	61.7	1 314 053	60.5	1 251 264	58.8	1 223 018
2003						
March Quarter	59.1	1 244 695	59.2	1 241 634	59.0	1 236 038
June Quarter	55.3	1 159 500	58.0	1 265 081	59.2	1 290 631
September Quarter	62.5	1 373 488	60.9	1 336 156	59.8	1 312 334

(a) Break in time series between the March and June quarters 2003. See Appendix 1 for details.

SUMMARY OF HOTELS, MOTELS AND SERVICED APARTMENTS, Australia

<i>Period</i>	<i>Establishments(a)</i>	<i>Guest rooms(a)</i>	<i>Bed spaces(a)</i>	<i>Persons employed(a)</i>	<i>Room nights occupied(a)</i>	<i>Room occupancy rate</i>
	no.	no.	no.	no.	'000	%
.....						
LICENSED HOTELS WITH FACILITIES						
2002						
June Quarter	776	78 183	204 368	69 872	4 138	58.2
September Quarter	780	77 603	203 531	69 923	4 470	62.7
December Quarter	777	77 516	203 238	69 699	4 770	67.2
2003						
March Quarter	781	77 477	203 876	68 458	4 458	64.0
June Quarter	799	78 089	204 484	69 155	4 109	57.8
September Quarter	794	77 914	203 346	64 990	4 810	67.1
Year ended September 2002	17 436	61.2
Year ended September 2003	18 147	64.0
.....						
MOTELS AND GUEST HOUSES WITH FACILITIES						
2002						
June Quarter	2 382	83 558	244 723	28 733	3 843	50.5
September Quarter	2 388	83 592	244 527	29 459	4 153	54.0
December Quarter	2 382	83 565	244 156	29 471	4 173	54.3
2003						
March Quarter	2 383	83 931	244 433	29 209	3 922	52.0
June Quarter	2 424	85 148	247 803	29 627	3 955	51.1
September Quarter	2 416	85 198	247 709	30 074	4 356	55.6
Year ended September 2002	16 019	52.3
Year ended September 2003	16 407	53.3
.....						
SERVICED APARTMENTS						
2002						
June Quarter	668	35 113	116 329	11 565	1 842	57.7
September Quarter	675	35 610	117 523	12 141	2 156	65.9
December Quarter	675	35 350	116 385	12 430	2 175	66.9
2003						
March Quarter	690	36 070	117 683	12 327	2 120	65.4
June Quarter	772	39 182	128 060	12 966	2 120	59.4
September Quarter	775	39 921	129 429	13 268	2 492	68.3
Year ended September 2002	8 072	62.7
Year ended September 2003	8 907	65.0
.....						
HOTELS, MOTELS AND SERVICED APARTMENTS						
2002						
June Quarter	3 826	196 854	565 420	110 170	9 824	54.8
September Quarter	3 843	196 805	565 581	111 523	10 778	59.6
December Quarter	3 834	196 431	563 779	111 600	11 118	61.7
2003						
March Quarter	3 854	197 478	565 992	109 994	10 501	59.1
June Quarter	3 995	202 419	580 347	111 748	10 184	55.3
September Quarter	3 985	203 033	580 484	108 332	11 658	62.5
Year ended September 2002	41 526	57.7
Year ended September 2003	43 461	59.7

.. not applicable

(a) Break in time series between the March and June quarters 2003. See Appendix 1 for details.

<i>Period</i>	Guest nights(a)	Bed occupancy rate	Guest arrivals(a)	Average length of stay	Takings from accommodation(a)
	'000	%	'000	days	\$'000
.....					
LICENSED HOTELS WITH FACILITIES					
2002					
June Quarter	6 657	35.8	2 957	2.3	557 622
September Quarter	7 439	39.8	3 218	2.3	609 027
December Quarter	7 987	42.9	3 417	2.3	668 532
2003					
March Quarter	7 381	40.3	3 143	2.3	621 399
June Quarter	6 607	35.5	2 876	2.3	553 849
September Quarter	7 940	42.4	3 340	2.4	664 512
Year ended September 2002	28 876	38.7	12 408	2.3	2 385 924
Year ended September 2003	29 914	40.3	12 776	2.3	2 508 292
.....					
MOTELS AND GUEST HOUSES WITH FACILITIES					
2002					
June Quarter	6 594	29.6	3 760	1.8	331 210
September Quarter	7 311	32.5	4 143	1.8	371 657
December Quarter	7 402	33.0	4 169	1.8	376 270
2003					
March Quarter	6 984	31.8	3 849	1.8	355 991
June Quarter	6 813	30.2	3 831	1.8	351 004
September Quarter	7 706	33.8	4 333	1.8	399 637
Year ended September 2002	28 251	31.5	15 923	1.8	1 412 183
Year ended September 2003	28 905	32.2	16 181	1.8	1 482 903
.....					
SERVICED APARTMENTS					
2002					
June Quarter	3 854	36.4	1 120	3.4	211 243
September Quarter	4 674	43.3	1 258	3.7	256 186
December Quarter	4 804	44.9	1 309	3.7	269 252
2003					
March Quarter	4 701	44.4	1 268	3.7	267 305
June Quarter	4 571	39.2	1 293	3.5	254 647
September Quarter	5 447	46.0	1 495	3.6	309 339
Year ended September 2002	17 684	41.4	4 851	3.6	962 382
Year ended September 2003	19 523	43.6	5 364	3.6	1 100 542
.....					
HOTELS, MOTELS AND SERVICED APARTMENTS					
2002					
June Quarter	17 105	33.2	7 836	2.2	1 100 074
September Quarter	19 424	37.4	8 619	2.3	1 236 869
December Quarter	20 193	39.0	8 894	2.3	1 314 053
2003					
March Quarter	19 066	37.5	8 260	2.3	1 244 695
June Quarter	17 991	34.1	8 000	2.2	1 159 500
September Quarter	21 093	39.6	9 167	2.3	1 373 488
Year ended September 2002	74 811	36.1	33 182	2.3	4 760 490
Year ended September 2003	78 342	37.5	34 320	2.3	5 091 737

(a) Break in time series between the March and June quarters 2003. See Appendix 1 for details.

Period	Licensed hotels with facilities	Motels and guest houses	Serviced apartments	STAR GRADING						Ungraded	Total
				1	2	3	4	5			
ESTABLISHMENTS, CAPACITY AND EMPLOYMENT (a) (no.)											
September Quarter 2002											
Establishments	780	2 388	675	62	449	1 848	952	109	423	3 843	
Guest rooms	77 603	83 592	35 610	2 207	13 305	69 176	72 721	24 670	14 726	196 805	
Bed spaces	203 531	244 527	117 523	6 991	39 335	203 724	208 493	63 775	43 263	565 581	
Persons employed	69 923	29 459	12 141	803	5 245	26 035	38 382	34 316	6 742	111 523	
September Quarter 2003											
Establishments	794	2 416	775	66	374	1 865	1 311	122	247	3 985	
Guest rooms	77 914	85 198	39 921	2 711	11 447	67 991	88 648	24 186	8 050	203 033	
Bed spaces	203 346	247 709	129 429	8 405	32 999	200 265	256 487	60 481	21 847	580 484	
Persons employed	64 990	30 074	13 268	605	4 941	24 095	44 990	29 932	3 769	108 332	
ROOM NIGHTS OCCUPIED (a) ('000)											
2002											
September Quarter	4 469.9	4 152.8	2 155.7	94.8	578.3	3 486.9	4 411.1	1 490.0	717.3	10 778.4	
2003											
July	1 576.0	1 462.8	846.1	48.9	159.0	1 195.6	1 841.6	520.5	119.3	3 884.9	
August	1 610.8	1 419.1	815.4	43.7	154.5	1 158.2	1 825.7	546.8	116.3	3 845.2	
September	1 622.7	1 474.5	830.7	41.4	155.0	1 206.7	1 865.6	538.9	120.5	3 928.0	
September Quarter	4 809.5	4 356.4	2 492.2	134.0	468.5	3 560.5	5 532.9	1 606.2	356.1	11 658.1	
ROOM OCCUPANCY RATE (%)											
2002											
September Quarter	62.7	54.0	65.9	46.7	47.4	54.8	66.0	65.6	53.3	59.6	
2003											
July	65.2	55.5	69.1	58.2	44.8	56.8	67.0	69.4	50.3	61.9	
August	66.7	53.8	66.2	52.0	43.6	55.0	66.5	72.9	47.8	61.2	
September	69.4	57.7	69.6	50.8	45.2	59.3	70.2	74.3	50.0	64.5	
September Quarter	67.1	55.6	68.3	53.7	44.5	57.0	67.9	72.2	49.4	62.5	
GUEST NIGHTS (a) ('000)											
2002											
September Quarter	7 438.9	7 311.3	4 673.5	198.0	1 032.2	6 413.8	7 912.1	2 476.9	1 390.8	19 423.8	
2003											
July	2 653.2	2 640.1	1 898.7	104.4	292.7	2 304.0	3 429.5	851.1	210.3	7 192.0	
August	2 628.8	2 457.2	1 718.6	90.2	272.7	2 126.0	3 231.3	881.8	202.6	6 804.6	
September	2 657.6	2 608.9	1 829.8	77.7	278.9	2 264.7	3 394.9	869.3	210.8	7 096.2	
September Quarter	7 939.5	7 706.3	5 447.0	272.2	844.4	6 694.6	10 055.7	2 602.2	623.7	21 092.8	
BED OCCUPANCY RATE (%)											
2002											
September Quarter	39.8	32.5	43.3	30.8	28.6	34.2	41.3	42.2	35.1	37.4	
2003											
July	42.1	34.4	47.6	40.1	28.6	37.2	43.1	45.4	32.3	40.0	
August	41.7	32.0	43.0	34.6	26.7	34.3	40.7	47.0	30.6	37.9	
September	43.6	35.1	47.4	30.8	28.2	37.8	44.1	47.9	32.3	40.8	
September Quarter	42.4	33.8	46.0	35.2	27.8	36.4	42.6	46.8	31.7	39.6	

(a) Break in time series between the March and June quarters 2003. See Appendix 1 for details.

Period	Licensed hotels with facilities	Motels and guest houses	Serviced apartments	STAR GRADING						Ungraded	Total
				1	2	3	4	5			
GUEST ARRIVALS (a) ('000)											
2002											
September Quarter	3 217.7	4 143.1	1 257.7	104.7	585.9	3 296.5	3 162.4	959.4	509.6	8 618.5	
2003											
July	1 098.5	1 478.3	511.1	53.9	159.6	1 124.0	1 320.8	340.9	88.7	3 087.9	
August	1 125.4	1 385.4	480.0	49.3	149.2	1 053.0	1 294.4	356.4	88.6	2 990.8	
September	1 116.1	1 468.8	503.5	46.1	154.1	1 122.5	1 339.4	336.9	89.4	3 088.4	
September Quarter	3 340.0	4 332.5	1 494.5	149.3	463.0	3 299.6	3 954.6	1 034.2	266.6	9 167.1	
AVERAGE LENGTH OF STAY (days)											
2002											
September Quarter	2.3	1.8	3.7	1.9	1.8	1.9	2.5	2.6	2.7	2.3	
2003											
July	2.4	1.8	3.7	1.9	1.8	2.0	2.6	2.5	2.4	2.3	
August	2.3	1.8	3.6	1.8	1.8	2.0	2.5	2.5	2.3	2.3	
September	2.4	1.8	3.6	1.7	1.8	2.0	2.5	2.6	2.4	2.3	
September Quarter	2.4	1.8	3.6	1.8	1.8	2.0	2.5	2.5	2.3	2.3	
TAKINGS FROM ACCOMMODATION (a) (\$'000)											
2002											
September Quarter	609 027	371 657	256 186	7 295	39 400	315 557	536 139	265 067	73 412	1 236 869	
2003											
July	213 677	134 572	104 223	3 377	11 689	107 520	223 767	94 280	11 837	452 471	
August	225 712	131 511	101 268	2 873	11 561	104 444	224 433	103 073	12 107	458 491	
September	225 123	133 555	103 849	2 572	10 779	105 543	229 495	102 517	11 621	462 527	
September Quarter	664 512	399 637	309 339	8 822	34 029	317 507	677 696	299 870	35 565	1 373 488	
AVERAGE TAKINGS PER ROOM NIGHT OCCUPIED (\$)											
2002											
September Quarter	136.3	89.5	118.8	77.0	68.1	90.5	121.5	177.9	102.3	114.8	
2003											
July	135.6	92.0	123.2	69.1	73.5	89.9	121.5	181.1	99.2	116.5	
August	140.1	92.7	124.2	65.7	74.8	90.2	122.9	188.5	104.1	119.2	
September	138.7	90.6	125.0	62.2	69.6	87.5	123.0	190.2	96.5	117.8	
September Quarter	138.2	91.7	124.1	65.9	72.6	89.2	122.5	186.7	99.9	117.8	
AVERAGE TAKINGS PER AVAILABLE ROOM NIGHT (\$)											
2002											
September Quarter	85.5	48.4	78.3	35.9	32.3	49.6	80.2	116.8	54.5	68.4	
2003											
July	88.5	51.0	85.1	40.2	32.9	51.1	81.5	125.7	49.9	72.1	
August	93.4	49.8	82.3	34.2	32.6	49.6	81.7	137.5	49.8	72.9	
September	96.3	52.3	87.0	31.6	31.4	51.8	86.3	141.3	48.3	76.0	
September Quarter	92.7	51.0	84.7	35.4	32.3	50.8	83.1	134.8	49.3	73.6	

(a) Break in time series between the March and June quarters 2003. See Appendix 1 for details.

Period	Licensed hotels with facilities	Motels and guest houses	Serviced apartments	STAR GRADING						Ungraded	Total
				1	2	3	4	5			
ESTABLISHMENTS, CAPACITY AND EMPLOYMENT (a) (no.)											
September Quarter 2002											
Establishments	195	985	132	31	179	693	233	25	151	1 312	
Guest rooms	23 750	32 261	7 477	1 214	5 230	24 591	20 915	6 701	4 837	63 488	
Bed spaces	58 738	95 115	23 738	4 340	15 485	71 247	56 733	15 162	14 624	177 591	
Persons employed	19 618	11 147	2 757	365	1 743	8 444	11 850	9 180	1 940	33 522	
September Quarter 2003											
Establishments	201	986	157	34	135	731	338	28	78	1 344	
Guest rooms	23 017	32 672	8 314	1 578	4 043	24 445	24 397	7 122	2 418	64 003	
Bed spaces	55 992	95 231	26 074	5 402	11 762	71 017	66 001	16 419	6 696	177 297	
Persons employed	19 076	10 913	2 920	230	1 613	7 797	12 963	9 324	982	32 909	
ROOM NIGHTS OCCUPIED (a) ('000)											
2002											
September Quarter	1 408.7	1 565.9	435.3	51.5	231.4	1 235.9	1 275.3	386.4	229.4	3 409.9	
2003											
July	497.9	553.3	175.6	29.2	58.7	425.6	533.1	146.7	33.5	1 226.8	
August	507.3	531.8	162.4	25.6	57.2	408.9	518.9	158.1	32.8	1 201.5	
September	508.7	563.9	170.1	23.6	58.8	434.6	535.0	157.8	32.9	1 242.7	
September Quarter	1 514.0	1 649.0	508.1	78.3	174.7	1 269.1	1 587.0	462.6	99.2	3 671.0	
ROOM OCCUPANCY RATE (%)											
2002											
September Quarter	64.6	52.8	63.3	46.1	48.1	54.6	66.4	62.7	51.6	58.4	
2003											
July	69.8	54.7	69.6	59.7	46.8	56.3	70.5	66.5	48.2	62.0	
August	71.1	52.5	64.3	52.3	45.7	54.0	68.6	71.6	47.1	60.7	
September	73.7	57.6	68.4	49.8	48.5	59.4	73.1	73.9	45.4	64.8	
September Quarter	71.5	54.9	67.4	54.0	47.0	56.5	70.7	70.6	46.9	62.5	
GUEST NIGHTS (a) ('000)											
2002											
September Quarter	2 331.6	2 806.0	892.6	123.3	416.4	2 254.8	2 149.4	617.3	469.0	6 030.2	
2003											
July	843.1	1 018.2	380.9	69.4	115.7	817.5	948.1	226.8	64.7	2 242.2	
August	842.3	932.3	335.3	56.7	107.0	746.3	885.7	252.2	62.0	2 109.9	
September	809.5	1 004.9	349.3	45.2	109.1	797.4	915.4	236.3	60.4	2 163.7	
September Quarter	2 494.9	2 955.4	1 065.5	171.2	331.9	2 361.2	2 749.1	715.3	187.1	6 515.9	
BED OCCUPANCY RATE (%)											
2002											
September Quarter	43.3	32.1	40.9	30.9	29.3	34.4	41.3	44.3	34.9	36.9	
2003											
July	48.6	34.5	47.8	41.4	31.7	37.2	46.3	44.6	32.9	40.9	
August	48.5	31.6	42.0	33.9	29.4	33.9	43.3	49.5	31.5	38.5	
September	48.2	35.2	44.8	27.9	30.9	37.5	46.2	48.0	30.1	40.7	
September Quarter	48.4	33.8	44.9	34.4	30.7	36.2	45.3	47.4	31.5	40.0	

(a) Break in time series between the March and June quarters 2003. See Appendix 1 for details.

Period	Licensed hotels with facilities	Motels and guest houses	Serviced apartments	STAR GRADING						Ungraded	Total
				1	2	3	4	5			
GUEST ARRIVALS (a) ('000)											
2002											
September Quarter	983.0	1 749.2	290.4	55.6	255.0	1 306.5	951.2	267.6	186.7	3 022.6	
2003											
July	346.7	633.5	116.7	32.6	63.5	450.3	417.1	103.4	30.0	1 097.0	
August	359.6	582.2	109.4	28.4	59.9	419.9	401.6	111.8	29.6	1 051.2	
September	342.0	623.2	114.9	25.0	62.3	451.5	409.5	103.3	28.5	1 080.2	
September Quarter	1 048.4	1 839.0	340.9	86.0	185.7	1 321.7	1 228.2	318.5	88.2	3 228.3	
AVERAGE LENGTH OF STAY (days)											
2002											
September Quarter	2.4	1.6	3.1	2.2	1.6	1.7	2.3	2.3	2.5	2.0	
2003											
July	2.4	1.6	3.3	2.1	1.8	1.8	2.3	2.2	2.2	2.0	
August	2.3	1.6	3.1	2.0	1.8	1.8	2.2	2.3	2.1	2.0	
September	2.4	1.6	3.0	1.8	1.8	1.8	2.2	2.3	2.1	2.0	
September Quarter	2.4	1.6	3.1	2.0	1.8	1.8	2.2	2.2	2.1	2.0	
TAKINGS FROM ACCOMMODATION (a) (\$'000)											
2002											
September Quarter	209 899	143 646	60 485	4 852	15 935	116 025	170 838	79 430	26 950	414 030	
2003											
July	75 225	52 207	24 985	2 180	4 988	40 155	71 724	29 016	4 355	152 417	
August	79 016	50 856	23 296	1 808	5 108	39 086	70 244	32 361	4 562	153 169	
September	77 748	52 055	24 157	1 536	4 435	39 439	72 080	32 852	3 617	153 960	
September Quarter	231 989	155 119	72 438	5 523	14 531	118 680	214 048	94 230	12 533	459 546	
AVERAGE TAKINGS PER ROOM NIGHT OCCUPIED (\$)											
2002											
September Quarter	149.0	91.7	138.9	94.2	68.9	93.9	134.0	205.6	117.5	121.4	
2003											
July	151.1	94.4	142.3	74.6	85.0	94.3	134.6	197.8	129.9	124.2	
August	155.8	95.6	143.5	70.7	89.2	95.6	135.4	204.7	139.1	127.5	
September	152.8	92.3	142.0	65.2	75.4	90.8	134.7	208.2	109.9	123.9	
September Quarter	153.2	94.1	142.6	70.5	83.2	93.5	134.9	203.7	126.3	125.2	
AVERAGE TAKINGS PER AVAILABLE ROOM NIGHT (\$)											
2002											
September Quarter	96.3	48.4	87.9	43.4	33.2	51.3	89.0	128.8	60.6	70.9	
2003											
July	105.4	51.6	99.0	44.6	39.8	53.1	94.8	131.4	62.6	77.1	
August	110.7	50.2	92.3	37.0	40.8	51.6	92.9	146.6	65.5	77.4	
September	112.6	53.1	97.2	32.4	36.6	53.9	98.5	153.8	49.9	80.2	
September Quarter	109.6	51.6	96.2	38.0	39.1	52.8	95.4	143.8	59.2	78.2	

(a) Break in time series between the March and June quarters 2003. See Appendix 1 for details.

Period	Licensed hotels with facilities	Motels and guest houses	Serviced apartments	STAR GRADING						Ungraded	Total
				1	2	3	4	5			
ESTABLISHMENTS, CAPACITY AND EMPLOYMENT (a) (no.)											
September Quarter 2002											
Establishments	132	494	89	8	64	372	206	21	44	715	
Guest rooms	12 576	15 520	5 088	313	1 676	11 804	13 151	4 217	2 023	33 184	
Bed spaces	30 160	44 804	15 269	907	5 137	33 630	35 179	9 395	5 985	90 233	
Persons employed	14 258	5 427	1 780	110	688	4 234	6 383	8 963	1 087	21 465	
September Quarter 2003											
Establishments	134	508	106	5	51	356	292	22	22	748	
Guest rooms	13 041	16 225	5 676	292	1 436	11 712	16 188	4 541	773	34 942	
Bed spaces	30 158	47 452	17 240	892	4 435	33 512	43 940	9 661	2 410	94 850	
Persons employed	9 155	5 877	1 750	58	634	3 946	7 488	4 155	501	16 782	
ROOM NIGHTS OCCUPIED (a) ('000)											
2002											
September Quarter	704.8	655.2	312.7	15.0	46.4	511.1	734.4	262.8	103.0	1 672.6	
2003											
July	251.1	233.9	126.1	6.1	13.4	178.4	301.7	99.3	12.2	611.1	
August	268.4	224.5	119.4	5.6	12.9	170.6	303.0	108.2	12.0	612.3	
September	254.2	231.7	113.4	5.7	12.4	174.2	295.2	99.5	12.2	599.3	
September Quarter	773.7	690.1	358.9	17.4	38.7	523.3	899.8	307.1	36.4	1 822.7	
ROOM OCCUPANCY RATE (%)											
2002											
September Quarter	61.0	45.9	67.3	52.2	30.5	47.1	60.9	67.7	55.4	54.9	
2003											
July	62.1	46.5	71.7	67.3	30.1	49.1	60.1	70.6	50.8	56.4	
August	66.4	44.6	67.8	62.2	28.9	47.0	60.4	76.9	50.2	56.5	
September	65.0	47.6	66.6	65.4	28.9	49.6	60.8	73.1	52.6	57.2	
September Quarter	64.5	46.2	68.7	64.9	29.3	48.6	60.4	73.5	51.2	56.7	
GUEST NIGHTS (a) ('000)											
2002											
September Quarter	1 085.9	1 150.7	596.1	25.7	87.1	931.3	1 205.5	390.5	192.6	2 832.7	
2003											
July	389.7	417.9	252.1	11.7	25.4	334.8	519.0	146.6	22.3	1 059.7	
August	411.8	385.7	226.7	10.7	24.3	311.5	499.8	156.1	21.8	1 024.2	
September	389.8	403.4	215.1	10.8	22.3	317.9	493.0	143.2	21.0	1 008.3	
September Quarter	1 191.3	1 207.0	693.9	33.1	72.0	964.2	1 511.8	445.9	65.2	3 092.2	
BED OCCUPANCY RATE (%)											
2002											
September Quarter	39.2	27.9	42.7	30.7	18.7	30.1	37.4	45.2	35.0	34.2	
2003											
July	41.7	28.4	47.2	42.2	18.5	32.2	38.1	48.9	29.8	36.0	
August	44.0	26.2	42.4	38.7	17.7	30.0	36.7	52.1	29.2	34.8	
September	43.1	28.3	41.6	40.3	16.7	31.6	37.4	49.4	29.1	35.4	
September Quarter	42.9	27.6	43.7	40.4	17.6	31.3	37.4	50.2	29.4	35.4	

(a) Break in time series between the March and June quarters 2003. See Appendix 1 for details.

Period	Licensed hotels with facilities	Motels and guest houses	Serviced apartments	STAR GRADING						Ungraded	Total
				1	2	3	4	5			
GUEST ARRIVALS (a) ('000)											
2002											
September Quarter	553.4	667.4	169.3	22.9	50.5	489.0	596.8	172.4	58.5	1 390.0	
2003											
July	178.3	237.0	80.8	9.4	13.8	168.2	230.2	67.1	7.5	496.1	
August	190.2	225.3	75.3	8.9	13.5	160.0	228.5	71.7	8.3	490.9	
September	179.7	237.2	67.1	8.8	12.8	164.8	226.2	63.6	7.7	484.0	
September Quarter	548.2	699.5	223.3	27.1	40.1	492.9	684.9	202.4	23.5	1 471.0	
AVERAGE LENGTH OF STAY (days)											
2002											
September Quarter	2.0	1.7	3.5	1.1	1.7	1.9	2.0	2.3	3.3	2.0	
2003											
July	2.2	1.8	3.1	1.2	1.8	2.0	2.3	2.2	3.0	2.1	
August	2.2	1.7	3.0	1.2	1.8	1.9	2.2	2.2	2.6	2.1	
September	2.2	1.7	3.2	1.2	1.7	1.9	2.2	2.3	2.7	2.1	
September Quarter	2.2	1.7	3.1	1.2	1.8	2.0	2.2	2.2	2.8	2.1	
TAKINGS FROM ACCOMMODATION (a) (\$'000)											
2002											
September Quarter	105 142	62 915	42 984	851	3 239	48 179	93 944	51 939	12 887	211 041	
2003											
July	35 925	22 961	17 255	356	860	16 844	38 261	18 263	1 558	76 141	
August	38 857	22 208	17 065	335	825	16 416	39 020	20 037	1 498	78 130	
September	37 024	21 705	15 759	327	763	15 445	37 291	19 167	1 496	74 489	
September Quarter	111 806	66 875	50 079	1 018	2 448	48 705	114 571	57 467	4 552	228 760	
AVERAGE TAKINGS PER ROOM NIGHT OCCUPIED (\$)											
2002											
September Quarter	149.2	96.0	137.5	56.6	69.8	94.3	127.9	197.7	125.2	126.2	
2003											
July	143.1	98.2	136.8	58.5	64.3	94.4	126.8	183.9	128.0	124.6	
August	144.8	98.9	142.9	59.5	64.0	96.2	128.8	185.2	124.5	127.6	
September	145.7	93.7	139.0	57.0	61.3	88.7	126.3	192.6	122.6	124.3	
September Quarter	144.5	96.9	139.5	58.3	63.2	93.1	127.3	187.1	125.0	125.5	
AVERAGE TAKINGS PER AVAILABLE ROOM NIGHT (\$)											
2002											
September Quarter	91.1	44.1	92.5	29.6	21.3	44.4	77.9	133.9	69.4	69.3	
2003											
July	88.9	45.7	98.1	39.3	19.3	46.4	76.2	129.7	65.0	70.3	
August	96.1	44.2	97.0	37.0	18.5	45.2	77.8	142.3	62.5	72.1	
September	94.6	44.6	92.5	37.3	17.7	44.0	76.8	140.7	64.5	71.1	
September Quarter	93.2	44.8	95.9	37.9	18.5	45.2	76.9	137.6	64.0	71.2	

(a) Break in time series between the March and June quarters 2003. See Appendix 1 for details.

HOTELS, MOTELS AND SERVICED APARTMENTS, Star grading—Qld

Period	Licensed hotels with facilities	Motels and guest houses	Serviced apartments	STAR GRADING						Ungraded	Total
				1	2	3	4	5			
ESTABLISHMENTS, CAPACITY AND EMPLOYMENT (a) (no.)											
September Quarter 2002											
Establishments	170	508	286	9	95	411	317	37	95	964	
Guest rooms	20 753	18 188	13 687	282	2 571	14 684	22 973	8 666	3 452	52 628	
Bed spaces	62 152	53 163	46 680	768	7 876	45 925	70 479	26 439	10 508	161 995	
Persons employed	20 255	6 459	4 315	96	1 107	5 641	11 123	11 611	1 451	31 029	
September Quarter 2003											
Establishments	170	518	322	12	82	408	414	42	52	1 010	
Guest rooms	20 516	18 574	15 677	335	2 103	14 949	28 589	7 055	1 736	54 767	
Bed spaces	62 662	54 397	51 780	889	6 157	46 635	89 610	20 710	4 838	168 839	
Persons employed	20 268	6 644	4 844	92	983	5 241	13 396	11 347	697	31 756	
ROOM NIGHTS OCCUPIED (a) ('000)											
2002											
September Quarter	1 258.5	1 090.7	881.1	14.5	128.2	873.2	1 488.5	519.2	206.6	3 230.2	
2003											
July	438.6	393.0	343.1	5.8	35.3	320.0	627.0	155.9	30.5	1 174.6	
August	430.8	381.9	338.7	5.7	33.7	309.2	613.8	159.3	29.6	1 151.3	
September	440.9	375.8	344.0	5.1	31.6	308.0	628.1	158.0	29.8	1 160.7	
September Quarter	1 310.2	1 150.6	1 025.8	16.6	100.5	937.2	1 869.0	473.3	89.9	3 486.6	
ROOM OCCUPANCY RATE (%)											
2002											
September Quarter	66.0	65.2	70.0	56.0	54.2	64.7	70.4	65.1	65.1	66.7	
2003											
July	69.0	68.5	70.6	55.9	54.1	69.3	70.8	71.3	57.4	69.3	
August	67.7	66.4	69.7	54.6	51.9	66.7	69.3	72.8	55.6	67.8	
September	71.6	67.5	73.2	51.0	50.4	68.7	73.2	74.7	57.6	70.7	
September Quarter	69.4	67.5	71.1	53.9	52.2	68.2	71.1	72.9	56.9	69.3	
GUEST NIGHTS (a) ('000)											
2002											
September Quarter	2 343.8	1 930.6	2 096.7	22.9	234.8	1 693.9	3 031.5	968.2	419.8	6 371.1	
2003											
July	820.8	710.8	838.2	10.9	61.2	658.3	1 299.4	285.6	54.5	2 369.8	
August	769.3	671.8	774.4	10.6	55.4	605.6	1 205.8	285.0	53.1	2 215.6	
September	828.0	676.3	850.2	9.8	55.0	636.4	1 303.5	296.6	53.2	2 354.4	
September Quarter	2 418.0	2 058.9	2 462.8	31.2	171.6	1 900.3	3 808.7	867.1	160.8	6 939.7	
BED OCCUPANCY RATE (%)											
2002											
September Quarter	41.0	39.5	48.8	32.4	32.4	40.1	46.8	39.8	43.4	42.8	
2003											
July	42.3	42.3	52.2	39.5	32.0	45.6	46.8	44.5	36.8	45.3	
August	39.6	39.9	48.2	38.4	29.1	41.9	43.4	44.4	35.9	42.4	
September	44.0	41.5	54.7	36.6	30.0	45.5	48.5	47.7	36.9	46.5	
September Quarter	41.9	41.2	51.7	38.2	30.4	44.3	46.2	45.5	36.5	44.7	

(a) Break in time series between the March and June quarters 2003. See Appendix 1 for details.

Period	Licensed hotels with facilities	Motels and guest houses	Serviced apartments	STAR GRADING						Ungraded	Total
				1	2	3	4	5			
GUEST ARRIVALS (a) ('000)											
2002											
September Quarter	834.5	962.5	476.9	11.1	121.7	712.7	973.6	325.3	129.4	2 273.9	
2003											
July	283.6	342.8	179.9	4.5	34.9	262.8	393.6	90.1	20.5	806.3	
August	277.9	322.6	172.8	4.5	31.9	241.0	384.7	91.2	20.0	773.3	
September	285.9	325.3	188.2	4.0	30.9	250.4	405.4	88.9	19.8	799.3	
September Quarter	847.4	990.7	540.9	13.0	97.7	754.1	1 183.7	270.1	60.3	2 379.0	
AVERAGE LENGTH OF STAY (days)											
2002											
September Quarter	2.8	2.0	4.4	2.1	1.9	2.4	3.1	3.0	3.2	2.8	
2003											
July	2.9	2.1	4.7	2.4	1.8	2.5	3.3	3.2	2.7	2.9	
August	2.8	2.1	4.5	2.4	1.7	2.5	3.1	3.1	2.7	2.9	
September	2.9	2.1	4.5	2.4	1.8	2.5	3.2	3.3	2.7	2.9	
September Quarter	2.9	2.1	4.6	2.4	1.8	2.5	3.2	3.2	2.7	2.9	
TAKINGS FROM ACCOMMODATION (a) (\$'000)											
2002											
September Quarter	169 127	90 732	93 306	778	8 307	73 339	164 613	87 176	18 953	353 166	
2003											
July	58 412	33 616	36 988	346	2 264	26 407	68 211	29 221	2 568	129 016	
August	60 723	32 753	36 759	322	2 123	25 228	68 104	31 863	2 595	130 235	
September	61 878	32 520	38 918	306	2 126	25 708	71 362	31 166	2 647	133 316	
September Quarter	181 013	98 889	112 664	974	6 514	77 343	207 676	92 250	7 810	392 567	
AVERAGE TAKINGS PER ROOM NIGHT OCCUPIED (\$)											
2002											
September Quarter	134.4	83.2	105.9	53.6	64.8	84.0	110.6	167.9	91.7	109.3	
2003											
July	133.2	85.5	107.8	59.5	64.1	82.5	108.8	187.4	84.1	109.8	
August	141.0	85.8	108.5	56.8	63.1	81.6	110.9	200.0	87.8	113.1	
September	140.4	86.5	113.1	59.7	67.4	83.5	113.6	197.2	88.7	114.9	
September Quarter	138.2	85.9	109.8	58.7	64.8	82.5	111.1	194.9	86.8	112.6	
AVERAGE TAKINGS PER AVAILABLE ROOM NIGHT (\$)											
2002											
September Quarter	88.6	54.2	74.1	30.0	35.1	54.3	77.9	109.3	59.7	73.0	
2003											
July	91.8	58.6	76.1	33.3	34.7	57.2	77.0	133.6	48.3	76.1	
August	95.5	57.0	75.6	31.0	32.7	54.4	76.8	145.7	48.8	76.8	
September	100.5	58.4	82.7	30.5	34.0	57.3	83.2	147.3	51.1	81.2	
September Quarter	95.9	58.0	78.1	31.6	33.8	56.3	79.0	142.1	49.4	78.0	

(a) Break in time series between the March and June quarters 2003. See Appendix 1 for details.

Period	Licensed hotels with facilities	Motels and guest houses	Serviced apartments	STAR GRADING						Ungraded	Total
				1	2	3	4	5			
ESTABLISHMENTS, CAPACITY AND EMPLOYMENT (a) (no.)											
September Quarter 2002											
Establishments	63	144	30	5	51	113	51	6	11	237	
Guest rooms	4 381	5 220	1 430	121	1 498	4 167	3 357	1 571	317	11 031	
Bed spaces	10 750	15 524	4 778	300	4 155	12 380	10 047	3 302	868	31 052	
Persons employed	4 069	2 039	507	86	793	2 197	2 002	1 353	184	6 615	
September Quarter 2003											
Establishments	66	145	35	7	44	113	66	9	7	246	
Guest rooms	4 807	5 264	1 615	162	1 628	3 637	4 054	2 033	172	11 686	
Bed spaces	11 440	15 389	5 582	447	4 225	10 740	11 984	4 544	471	32 411	
Persons employed	4 098	2 262	618	81	905	1 694	2 680	1 502	116	6 978	
ROOM NIGHTS OCCUPIED (a) ('000)											
2002											
September Quarter	233.4	237.1	85.0	2.2	58.2	198.3	185.3	98.4	13.1	555.6	
2003											
July	81.3	77.4	30.4	1.4	17.5	54.8	69.4	43.8	2.2	189.1	
August	86.3	77.6	31.4	1.3	18.4	54.3	72.9	46.1	2.4	195.3	
September	89.6	86.4	33.5	1.5	20.2	60.4	76.5	48.1	2.8	209.5	
September Quarter	257.1	241.5	95.3	4.1	56.0	169.5	218.8	138.0	7.5	593.9	
ROOM OCCUPANCY RATE (%)											
2002											
September Quarter	57.9	49.4	65.8	19.7	42.2	51.7	60.0	68.1	49.1	54.9	
2003											
July	54.6	47.4	61.6	26.9	34.7	48.6	55.6	69.5	41.0	52.3	
August	57.9	47.6	63.7	26.0	36.4	48.1	58.3	73.1	45.6	54.0	
September	62.1	54.7	69.6	29.9	41.3	55.3	63.1	78.9	55.2	59.8	
September Quarter	58.1	49.9	64.9	27.6	37.4	50.7	58.9	73.8	47.2	55.3	
GUEST NIGHTS (a) ('000)											
2002											
September Quarter	340.6	387.6	169.3	3.3	94.9	338.8	306.9	129.6	24.0	897.5	
2003											
July	115.5	129.7	59.3	2.4	28.2	96.6	116.1	57.3	4.0	304.5	
August	122.5	123.9	55.4	2.3	28.4	90.5	116.2	60.1	4.2	301.7	
September	127.9	143.8	63.6	2.5	33.4	104.8	127.2	62.2	5.2	335.2	
September Quarter	365.9	397.3	178.3	7.2	90.0	291.8	359.6	179.5	13.3	941.4	
BED OCCUPANCY RATE (%)											
2002											
September Quarter	34.4	27.1	39.0	11.9	24.8	29.7	33.2	42.6	32.2	31.5	
2003											
July	32.6	27.2	34.6	17.0	21.5	29.0	31.4	40.7	27.1	30.4	
August	34.5	26.0	32.3	16.9	21.7	27.2	31.4	42.6	28.7	30.1	
September	37.3	31.1	38.1	18.7	26.3	32.5	35.5	45.6	36.4	34.5	
September Quarter	34.8	28.1	35.0	17.5	23.2	29.5	32.7	42.9	30.7	31.6	

(a) Break in time series between the March and June quarters 2003. See Appendix 1 for details.

Period	Licensed hotels with facilities	Motels and guest houses	Serviced apartments	STAR GRADING						Ungraded	Total
				1	2	3	4	5			
GUEST ARRIVALS (a) ('000)											
2002											
September Quarter	178.9	230.0	41.2	2.0	59.7	192.4	121.9	64.7	9.5	450.1	
2003											
July	63.1	74.2	18.9	1.5	17.2	52.7	52.4	30.5	1.9	156.2	
August	67.3	72.4	18.0	1.6	17.2	50.3	54.3	32.5	1.9	157.8	
September	67.8	83.5	20.0	1.7	19.3	58.4	57.7	32.0	2.1	171.2	
September Quarter	198.2	230.1	56.9	4.8	53.7	161.4	164.4	95.0	5.9	485.2	
AVERAGE LENGTH OF STAY (days)											
2002											
September Quarter	1.9	1.7	4.1	1.7	1.6	1.8	2.5	2.0	2.5	2.0	
2003											
July	1.8	1.7	3.1	1.5	1.6	1.8	2.2	1.9	2.1	1.9	
August	1.8	1.7	3.1	1.5	1.7	1.8	2.1	1.8	2.2	1.9	
September	1.9	1.7	3.2	1.5	1.7	1.8	2.2	1.9	2.5	2.0	
September Quarter	1.8	1.7	3.1	1.5	1.7	1.8	2.2	1.9	2.3	1.9	
TAKINGS FROM ACCOMMODATION (a) (\$'000)											
2002											
September Quarter	26 109	20 150	8 595	110	3 608	15 968	20 376	13 615	1 177	54 854	
2003											
July	8 946	6 868	3 230	82	1 056	4 279	7 699	5 744	184	19 045	
August	9 837	6 771	3 335	79	1 113	4 276	7 925	6 346	205	19 944	
September	10 266	7 596	3 695	90	1 255	4 864	8 614	6 487	247	21 557	
September Quarter	29 050	21 236	10 261	251	3 424	13 420	24 237	18 577	637	60 546	
AVERAGE TAKINGS PER ROOM NIGHT OCCUPIED (\$)											
2002											
September Quarter	111.8	85.0	101.2	50.0	62.0	80.5	110.0	138.3	89.7	98.7	
2003											
July	110.0	88.7	106.3	61.0	60.4	78.0	110.9	131.1	84.3	100.7	
August	114.0	87.2	106.1	60.1	60.6	78.8	108.7	137.7	84.5	102.1	
September	114.6	87.9	110.3	62.2	62.2	80.6	112.6	134.8	86.9	102.9	
September Quarter	113.0	87.9	107.6	61.1	61.1	79.2	110.8	134.6	85.4	101.9	
AVERAGE TAKINGS PER AVAILABLE ROOM NIGHT (\$)											
2002											
September Quarter	64.8	42.0	66.6	9.9	26.2	41.7	66.0	94.2	44.0	54.2	
2003											
July	60.0	42.1	65.5	16.4	20.9	38.0	61.6	91.1	34.6	52.7	
August	66.0	41.5	67.6	15.6	22.1	37.9	63.4	100.7	38.5	55.2	
September	71.2	48.1	76.7	18.6	25.7	44.6	71.0	106.4	47.9	61.5	
September Quarter	65.7	43.8	69.9	16.9	22.9	40.1	65.3	99.3	40.3	56.4	

(a) Break in time series between the March and June quarters 2003. See Appendix 1 for details.

Period	Licensed hotels with facilities	Motels and guest houses	Serviced apartments	STAR GRADING						Ungraded	Total
				1	2	3	4	5			
ESTABLISHMENTS, CAPACITY AND EMPLOYMENT (a) (no.)											
September Quarter 2002											
Establishments	129	126	71	2	21	133	74	15	81	326	
Guest rooms	9 473	5 604	4 229	np	np	7 379	5 843	2 724	2 612	19 306	
Bed spaces	24 072	15 128	14 626	np	np	20 259	17 217	7 674	6 841	53 826	
Persons employed	6 310	1 754	1 499	np	np	2 673	2 952	2 215	1 359	9 563	
September Quarter 2003											
Establishments	130	130	85	2	21	134	108	17	63	345	
Guest rooms	9 587	5 763	4 835	np	np	7 001	7 436	2 832	2 248	20 185	
Bed spaces	24 469	15 341	16 133	np	np	19 223	22 053	7 779	5 403	55 943	
Persons employed	6 330	1 773	1 757	np	np	2 631	3 462	2 407	1 080	9 860	
ROOM NIGHTS OCCUPIED (a) ('000)											
2002											
September Quarter	520.8	249.9	227.2	np	np	357.2	343.1	166.8	94.2	998.0	
2003											
July	183.3	83.1	91.1	np	np	114.9	143.5	61.1	29.3	357.5	
August	186.6	82.8	85.6	np	np	112.7	143.2	60.9	28.9	355.0	
September	199.6	99.0	94.0	np	np	127.3	160.8	62.0	32.3	392.5	
September Quarter	569.5	264.9	270.7	np	np	355.0	447.5	184.1	90.5	1 105.1	
ROOM OCCUPANCY RATE (%)											
2002											
September Quarter	60.0	48.8	58.4	np	np	52.6	64.0	66.6	40.1	56.4	
2003											
July	61.7	46.5	63.4	np	np	52.9	62.2	69.6	46.2	57.7	
August	62.8	46.4	57.3	np	np	51.9	62.1	69.4	41.8	56.8	
September	69.4	57.3	65.0	np	np	60.6	72.1	73.0	48.2	64.9	
September Quarter	64.6	50.0	61.8	np	np	55.1	65.4	70.6	45.3	59.7	
GUEST NIGHTS (a) ('000)											
2002											
September Quarter	795.2	406.2	487.7	np	np	606.4	591.7	289.6	143.6	1 689.1	
2003											
July	283.3	140.5	205.9	np	np	196.5	265.5	110.8	44.0	629.6	
August	280.6	132.2	177.2	np	np	180.5	246.9	105.6	43.0	590.0	
September	303.6	166.4	205.6	np	np	212.5	284.8	110.5	52.2	675.6	
September Quarter	867.4	439.1	588.6	np	np	589.5	797.1	326.9	139.2	1 895.2	
BED OCCUPANCY RATE (%)											
2002											
September Quarter	36.0	29.4	36.2	np	np	32.5	37.4	41.0	23.3	34.2	
2003											
July	37.3	29.5	42.3	np	np	33.0	38.8	45.9	28.5	36.6	
August	37.0	27.8	35.6	np	np	30.3	36.1	43.8	26.1	34.1	
September	41.4	36.2	42.7	np	np	36.8	43.0	47.4	32.7	40.3	
September Quarter	38.5	31.1	40.2	np	np	33.3	39.3	45.7	29.1	37.0	

np not available for publication but included in totals where applicable, unless otherwise indicated

(a) Break in time series between the March and June quarters 2003. See Appendix 1 for details.

Period	Licensed hotels with facilities	Motels and guest houses	Serviced apartments	STAR GRADING						Ungraded	Total
				1	2	3	4	5			
GUEST ARRIVALS (a) ('000)											
2002											
September Quarter	379.7	197.2	145.1	np	np	279.0	246.7	100.9	67.7	722.1	
2003											
July	131.6	68.0	58.2	np	np	90.5	102.3	39.5	19.1	257.8	
August	132.7	65.7	52.7	np	np	84.2	100.7	39.2	20.1	251.0	
September	142.2	82.1	61.7	np	np	98.9	116.9	39.5	22.8	286.0	
September Quarter	406.4	215.8	172.6	np	np	273.6	319.9	118.2	62.0	794.8	
AVERAGE LENGTH OF STAY (days)											
2002											
September Quarter	2.1	2.1	3.4	np	np	2.2	2.4	2.9	2.1	2.3	
2003											
July	2.2	2.1	3.5	np	np	2.2	2.6	2.8	2.3	2.4	
August	2.1	2.0	3.4	np	np	2.1	2.5	2.7	2.1	2.4	
September	2.1	2.0	3.3	np	np	2.1	2.4	2.8	2.3	2.4	
September Quarter	2.1	2.0	3.4	np	np	2.2	2.5	2.8	2.2	2.4	
TAKINGS FROM ACCOMMODATION (a) (\$'000)											
2002											
September Quarter	56 289	19 996	26 052	np	np	29 330	38 731	24 281	7 302	102 337	
2003											
July	20 115	6 952	11 462	np	np	9 864	16 660	9 226	2 255	38 529	
August	20 651	6 998	10 856	np	np	9 606	16 655	9 358	2 323	38 505	
September	22 581	8 439	11 658	np	np	10 660	18 821	9 984	2 611	42 677	
September Quarter	63 346	22 389	33 975	np	np	30 130	52 136	28 568	7 188	119 710	
AVERAGE TAKINGS PER ROOM NIGHT OCCUPIED (\$)											
2002											
September Quarter	108.1	80.0	114.7	np	np	82.1	112.9	145.6	77.5	102.5	
2003											
July	109.7	83.7	125.8	np	np	85.9	116.1	151.0	76.9	107.8	
August	110.6	84.5	126.9	np	np	85.2	116.3	153.7	80.3	108.5	
September	113.2	85.2	124.1	np	np	83.7	117.0	160.9	80.9	108.7	
September Quarter	111.2	84.5	125.5	np	np	84.9	116.5	155.2	79.4	108.3	
AVERAGE TAKINGS PER AVAILABLE ROOM NIGHT (\$)											
2002											
September Quarter	64.8	39.0	67.0	np	np	43.2	72.2	96.9	31.1	57.8	
2003											
July	67.7	38.9	79.8	np	np	45.4	72.3	105.1	35.5	62.2	
August	69.5	39.2	72.7	np	np	44.3	72.3	106.6	33.6	61.6	
September	78.5	48.8	80.7	np	np	50.8	84.4	117.5	39.0	70.5	
September Quarter	71.8	42.2	77.6	np	np	46.8	76.2	109.6	36.0	64.7	

np not available for publication but included in totals where applicable, unless otherwise indicated

(a) Break in time series between the March and June quarters 2003. See Appendix 1 for details.

Period	Licensed hotels with facilities	Motels and guest houses	Serviced apartments	STAR GRADING						Ungraded	Total
				1	2	3	4	5			
ESTABLISHMENTS, CAPACITY AND EMPLOYMENT (a) (no.)											
September Quarter 2002											
Establishments	54	54	31	1	13	74	35	—	16	139	
Guest rooms	2 863	1 716	1 125	np	np	2 654	2 169	—	456	5 704	
Bed spaces	7 864	5 243	3 914	np	np	8 139	6 249	—	1 454	17 021	
Persons employed	2 448	886	492	np	np	1 326	1 908	—	374	3 826	
September Quarter 2003											
Establishments	54	57	32	1	15	71	46	—	10	143	
Guest rooms	2 929	1 909	1 163	np	np	2 558	2 638	—	np	6 001	
Bed spaces	8 163	5 683	3 972	np	np	7 701	7 735	—	np	17 818	
Persons employed	2 515	1 013	547	np	np	1 404	2 213	—	np	4 075	
ROOM NIGHTS OCCUPIED (a) ('000)											
2002											
September Quarter	101.1	60.2	46.2	np	np	81.5	101.0	—	14.0	207.5	
2003											
July	33.9	20.2	16.7	np	3.4	25.7	39.5	—	np	70.7	
August	37.5	21.3	18.8	np	3.4	26.5	45.6	—	np	77.7	
September	43.5	25.0	20.8	np	np	34.4	48.6	—	2.5	89.4	
September Quarter	114.9	66.6	56.3	np	np	86.7	133.6	—	np	237.8	
ROOM OCCUPANCY RATE (%)											
2002											
September Quarter	38.5	38.1	44.6	np	np	33.4	50.6	—	33.4	39.6	
2003											
July	37.3	34.2	46.2	np	20.9	32.5	48.4	—	np	38.0	
August	41.3	36.3	52.1	np	20.9	33.4	56.1	—	np	41.8	
September	49.5	43.7	59.7	np	np	44.8	61.4	—	32.3	49.7	
September Quarter	42.7	38.0	52.6	np	np	36.8	55.2	—	np	43.1	
GUEST NIGHTS (a) ('000)											
2002											
September Quarter	152.9	107.3	97.3	np	np	155.6	155.4	—	29.1	357.5	
2003											
July	50.9	35.3	33.2	np	6.1	47.6	61.4	—	np	119.4	
August	56.0	37.2	34.9	np	6.0	48.1	70.0	—	np	128.2	
September	69.9	48.2	43.6	np	np	68.8	80.5	—	6.1	161.7	
September Quarter	176.8	120.7	111.7	np	np	164.5	211.9	—	np	409.2	
BED OCCUPANCY RATE (%)											
2002											
September Quarter	21.2	22.2	27.0	np	np	20.8	27.0	—	21.8	22.9	
2003											
July	20.1	20.1	26.9	np	13.0	20.0	25.7	—	np	21.6	
August	22.1	21.3	28.4	np	12.8	20.1	29.3	—	np	23.3	
September	28.5	28.3	36.6	np	np	29.8	34.7	—	24.5	30.2	
September Quarter	23.5	23.2	30.6	np	np	23.2	29.8	—	np	25.0	
— nil or rounded to zero (including null cells) (a) Break in time series between the March and June quarters 2003. See Appendix 1 for details. np not available for publication but included in totals where applicable, unless otherwise indicated											

Period	Licensed hotels with facilities	Motels and guest houses	Serviced apartments	STAR GRADING						Ungraded	Total
				1	2	3	4	5			
GUEST ARRIVALS (a) ('000)											
2002											
September Quarter	84.2	59.8	38.6	np	np	86.4	72.5	—	13.9	182.6	
2003											
July	27.8	20.3	13.5	np	2.8	25.6	30.8	—	np	61.7	
August	30.5	20.9	13.1	np	2.7	26.3	33.2	—	np	64.6	
September	39.4	27.7	18.2	np	np	38.7	39.7	—	3.6	85.3	
September Quarter	97.7	69.0	44.9	np	np	90.6	103.6	—	np	211.6	
AVERAGE LENGTH OF STAY (days)											
2002											
September Quarter	1.8	1.8	2.5	np	np	1.8	2.1	—	2.1	2.0	
2003											
July	1.8	1.7	2.4	np	2.2	1.9	2.0	—	np	1.9	
August	1.8	1.8	2.7	np	2.3	1.8	2.1	—	np	2.0	
September	1.8	1.7	2.4	np	np	1.8	2.0	—	1.7	1.9	
September Quarter	1.8	1.7	2.5	np	np	1.8	2.0	—	np	1.9	
TAKINGS FROM ACCOMMODATION (a) (\$'000)											
2002											
September Quarter	9 103	5 239	4 934	np	np	6 310	11 161	—	1 201	19 276	
2003											
July	3 216	1 869	1 874	np	188	2 152	4 455	—	np	6 959	
August	3 767	2 008	2 076	np	206	2 213	5 258	—	np	7 851	
September	4 395	2 467	2 389	np	np	2 965	5 797	—	245	9 250	
September Quarter	11 378	6 344	6 339	np	np	7 330	15 510	—	np	24 061	
AVERAGE TAKINGS PER ROOM NIGHT OCCUPIED (\$)											
2002											
September Quarter	90.0	87.0	106.8	np	np	77.4	110.5	—	85.8	92.9	
2003											
July	94.9	92.7	112.6	np	54.8	83.6	112.9	—	np	98.4	
August	100.4	94.1	110.4	np	60.0	83.5	115.3	—	np	101.1	
September	100.9	98.5	114.6	np	np	86.2	119.4	—	97.8	103.4	
September Quarter	99.0	95.3	112.6	np	np	84.6	116.1	—	np	101.2	
AVERAGE TAKINGS PER AVAILABLE ROOM NIGHT (\$)											
2002											
September Quarter	34.7	33.2	47.7	np	np	25.8	55.9	—	28.6	36.8	
2003											
July	35.4	31.7	52.0	np	11.4	27.1	54.6	—	np	37.4	
August	41.5	34.2	57.6	np	12.5	27.9	64.6	—	np	42.3	
September	50.0	43.1	68.5	np	np	38.6	73.3	—	31.6	51.4	
September Quarter	42.2	36.2	59.2	np	np	31.1	64.1	—	np	43.6	

— nil or rounded to zero (including null cells)

np not available for publication but included in totals where applicable, unless otherwise indicated

(a) Break in time series between the March and June quarters 2003. See Appendix 1 for details.

Period	Licensed hotels with facilities	Motels and guest houses	Serviced apartments	STAR GRADING						Ungraded	Total
				1	2	3	4	5			
ESTABLISHMENTS, CAPACITY AND EMPLOYMENT (a) (no.)											
September Quarter 2002											
Establishments	23	50	17	5	19	32	13	4	17	90	
Guest rooms	1 946	3 231	1 131	np	773	2 460	1 753	np	589	6 308	
Bed spaces	5 223	9 820	3 706	np	2 392	7 708	5 281	np	1 671	18 749	
Persons employed	1 787	1 071	351	np	300	969	961	np	229	3 209	
September Quarter 2003											
Establishments	24	46	20	4	17	35	18	3	13	90	
Guest rooms	2 108	2 948	1 324	np	685	2 313	2 536	np	364	6 380	
Bed spaces	5 870	8 967	4 283	np	1 951	7 274	7 857	np	983	19 120	
Persons employed	1 865	909	374	np	225	814	1 202	np	174	3 148	
ROOM NIGHTS OCCUPIED (a) ('000)											
2002											
September Quarter	133.1	197.6	80.5	np	45.4	155.9	127.9	np	31.5	411.1	
2003											
July	49.9	68.3	32.9	np	15.1	52.5	64.7	np	7.6	151.1	
August	48.9	64.5	30.1	np	13.0	49.4	64.3	np	6.5	143.5	
September	42.5	54.7	26.8	np	10.2	43.6	55.3	np	5.9	124.0	
September Quarter	141.3	187.5	89.8	np	38.3	145.5	184.3	np	20.0	418.6	
ROOM OCCUPANCY RATE (%)											
2002											
September Quarter	74.3	66.5	77.4	np	63.9	68.9	79.3	np	58.1	70.8	
2003											
July	76.3	74.8	80.2	np	71.2	73.2	82.3	np	67.1	76.4	
August	74.9	70.5	73.3	np	61.3	68.9	81.8	np	57.9	72.5	
September	67.2	61.9	67.4	np	49.7	62.9	72.7	np	53.7	64.8	
September Quarter	72.9	69.1	73.7	np	60.8	68.4	79.0	np	59.6	71.3	
GUEST NIGHTS (a) ('000)											
2002											
September Quarter	223.7	341.0	160.6	np	76.8	289.5	217.2	np	61.8	725.4	
2003											
July	83.3	123.5	69.7	np	25.5	103.3	112.8	np	13.1	276.5	
August	78.2	109.9	61.4	np	21.2	91.0	107.6	np	11.3	249.5	
September	67.2	92.4	52.7	np	17.2	78.9	91.2	np	9.2	212.3	
September Quarter	228.8	325.7	183.8	np	63.9	273.3	311.6	np	33.6	738.3	
BED OCCUPANCY RATE (%)											
2002											
September Quarter	46.6	37.7	47.1	np	34.9	40.8	44.7	np	40.2	42.1	
2003											
July	45.8	44.4	52.5	np	42.2	45.8	46.3	np	42.9	46.6	
August	43.0	39.5	46.2	np	35.0	40.4	44.2	np	36.9	42.1	
September	38.2	34.3	41.0	np	29.4	36.1	38.7	np	31.3	37.0	
September Quarter	42.4	39.5	46.6	np	35.6	40.8	43.1	np	37.1	42.0	

np not available for publication but included in totals where applicable, unless otherwise indicated

(a) Break in time series between the March and June quarters 2003. See Appendix 1 for details.

Period	Licensed hotels with facilities	Motels and guest houses	Serviced apartments	STAR GRADING						Ungraded	Total
				1	2	3	4	5			
GUEST ARRIVALS (a) ('000)											
2002											
September Quarter	118.0	194.9	50.8	np	44.0	168.7	97.6	np	22.0	363.6	
2003											
July	38.0	71.5	27.0	np	13.4	58.5	48.4	np	6.5	136.5	
August	36.1	64.3	23.3	np	10.3	52.5	47.1	np	5.7	123.7	
September	30.9	54.7	20.2	np	9.0	44.0	41.1	np	4.2	105.8	
September Quarter	105.1	190.5	70.5	np	32.7	154.9	136.6	np	16.4	366.1	
AVERAGE LENGTH OF STAY (days)											
2002											
September Quarter	1.9	1.8	3.2	np	1.7	1.7	2.2	np	2.8	2.0	
2003											
July	2.2	1.7	2.6	np	1.9	1.8	2.3	np	2.0	2.0	
August	2.2	1.7	2.6	np	2.1	1.7	2.3	np	2.0	2.0	
September	2.2	1.7	2.6	np	1.9	1.8	2.2	np	2.2	2.0	
September Quarter	2.2	1.7	2.6	np	2.0	1.8	2.3	np	2.1	2.0	
TAKINGS FROM ACCOMMODATION (a) (\$'000)											
2002											
September Quarter	19 912	20 989	9 720	np	3 670	19 637	18 287	np	2 975	50 620	
2003											
July	6 841	7 238	4 633	np	1 269	5 886	8 905	np	585	18 713	
August	6 880	6 956	4 265	np	1 085	5 483	8 932	np	600	18 101	
September	5 563	5 644	3 516	np	788	4 531	7 085	np	580	14 724	
September Quarter	19 284	19 839	12 415	np	3 142	15 900	24 923	np	1 764	51 537	
AVERAGE TAKINGS PER ROOM NIGHT OCCUPIED (\$)											
2002											
September Quarter	149.6	106.2	120.8	np	80.8	125.9	143.0	np	94.4	123.1	
2003											
July	137.2	105.9	140.7	np	83.9	112.1	137.6	np	77.3	123.8	
August	140.6	107.9	141.7	np	83.4	110.9	138.9	np	91.8	126.2	
September	130.9	103.1	131.4	np	77.2	103.9	128.1	np	98.9	118.7	
September Quarter	136.5	105.8	138.3	np	81.9	109.2	135.2	np	88.4	123.1	
AVERAGE TAKINGS PER AVAILABLE ROOM NIGHT (\$)											
2002											
September Quarter	111.2	70.6	93.4	np	51.6	86.8	113.4	np	54.9	87.2	
2003											
July	104.7	79.2	112.9	np	59.8	82.1	113.3	np	51.9	94.6	
August	105.3	76.1	103.9	np	51.1	76.5	113.6	np	53.1	91.5	
September	88.0	63.8	88.5	np	38.4	65.3	93.1	np	53.1	76.9	
September Quarter	99.4	73.1	101.9	np	49.9	74.7	106.8	np	52.7	87.8	

np not available for publication but included in totals where applicable, unless otherwise indicated

(a) Break in time series between the March and June quarters 2003. See Appendix 1 for details.

Period	Licensed hotels with facilities	Motels and guest houses	Serviced apartments	STAR GRADING						Ungraded	Total
				1	2	3	4	5			
ESTABLISHMENTS, CAPACITY AND EMPLOYMENT (a) (no.)											
September Quarter 2002											
Establishments	14	27	19	1	7	20	23	1	8	60	
Guest rooms	1 861	1 852	1 443	np	np	1 437	2 560	np	440	5 156	
Bed spaces	4 572	5 730	4 812	np	np	4 436	7 308	np	1 312	15 114	
Persons employed	1 178	676	440	np	np	551	1 203	np	118	2 294	
September Quarter 2003											
Establishments	15	26	18	1	9	17	29	1	2	59	
Guest rooms	1 909	1 843	1 317	np	478	1 376	2 810	np	np	5 069	
Bed spaces	4 592	5 249	4 365	np	1 643	4 163	7 307	np	np	14 206	
Persons employed	1 683	683	458	np	119	568	1 586	np	np	2 824	
ROOM NIGHTS OCCUPIED (a) ('000)											
2002											
September Quarter	109.4	96.2	87.8	np	np	73.7	155.7	np	25.5	293.5	
2003											
July	40.0	33.7	30.2	np	8.0	23.6	62.7	np	np	103.9	
August	44.9	34.6	29.1	np	7.9	26.5	64.1	np	np	108.6	
September	43.8	37.9	28.2	np	9.4	24.2	66.1	np	np	109.9	
September Quarter	128.8	106.2	87.4	np	25.3	74.3	192.9	np	np	322.4	
ROOM OCCUPANCY RATE (%)											
2002											
September Quarter	63.9	56.5	66.1	np	np	55.7	66.1	np	63.0	61.9	
2003											
July	67.6	59.0	74.0	np	53.9	55.3	72.0	np	np	66.1	
August	75.9	60.6	71.4	np	53.5	62.2	73.5	np	np	69.2	
September	76.5	68.6	74.7	np	65.4	61.4	78.4	np	np	73.1	
September Quarter	73.3	62.7	73.3	np	57.5	59.6	74.6	np	np	69.4	
GUEST NIGHTS (a) ('000)											
2002											
September Quarter	165.1	181.9	173.2	np	np	143.5	254.6	np	50.8	520.3	
2003											
July	66.5	64.3	59.5	np	18.9	49.3	107.2	np	np	190.3	
August	68.0	64.3	53.3	np	18.2	52.5	99.4	np	np	185.6	
September	61.8	73.6	49.7	np	22.1	48.1	99.4	np	np	185.1	
September Quarter	196.3	202.1	162.6	np	59.2	149.9	305.9	np	np	561.0	
BED OCCUPANCY RATE (%)											
2002											
September Quarter	39.3	34.5	39.1	np	np	35.2	37.9	np	42.1	37.4	
2003											
July	46.7	39.5	44.0	np	37.1	38.2	47.3	np	np	43.2	
August	47.8	39.5	39.7	np	35.7	41.0	43.9	np	np	42.2	
September	44.8	46.7	42.9	np	44.8	43.7	45.3	np	np	45.0	
September Quarter	46.5	41.9	42.2	np	39.1	40.9	45.5	np	np	43.5	

np not available for publication but included in totals where applicable, unless otherwise indicated

(a) Break in time series between the March and June quarters 2003. See Appendix 1 for details.

Period	Licensed hotels with facilities	Motels and guest houses	Serviced apartments	STAR GRADING						Ungraded	Total
				1	2	3	4	5			
GUEST ARRIVALS (a) ('000)											
2002											
September Quarter	86.1	82.1	45.4	np	np	61.7	102.1	np	22.0	213.5	
2003											
July	29.3	31.0	16.1	np	8.7	15.6	46.1	np	np	76.4	
August	31.0	32.0	15.3	np	8.2	18.8	44.3	np	np	78.3	
September	28.3	35.1	13.2	np	9.9	15.8	42.9	np	np	76.5	
September Quarter	88.6	98.0	44.6	np	26.8	50.2	133.3	np	np	231.2	
AVERAGE LENGTH OF STAY (days)											
2002											
September Quarter	1.9	2.2	3.8	np	np	2.3	2.5	np	2.3	2.4	
2003											
July	2.3	2.1	3.7	np	2.2	3.2	2.3	np	np	2.5	
August	2.2	2.0	3.5	np	2.2	2.8	2.2	np	np	2.4	
September	2.2	2.1	3.8	np	2.2	3.0	2.3	np	np	2.4	
September Quarter	2.2	2.1	3.6	np	2.2	3.0	2.3	np	np	2.4	
TAKINGS FROM ACCOMMODATION (a) (\$'000)											
2002											
September Quarter	13 445	7 990	10 111	np	np	6 769	18 188	np	1 968	31 546	
2003											
July	4 997	2 860	3 795	np	584	1 934	7 853	np	np	11 651	
August	5 981	2 959	3 617	np	594	2 135	8 296	np	np	12 557	
September	5 669	3 128	3 758	np	644	1 930	8 446	np	np	12 554	
September Quarter	16 646	8 947	11 169	np	1 823	5 999	24 595	np	np	36 762	
AVERAGE TAKINGS PER ROOM NIGHT OCCUPIED (\$)											
2002											
September Quarter	122.9	83.0	115.1	np	np	91.9	116.8	np	77.2	107.5	
2003											
July	124.9	84.8	125.7	np	73.1	82.0	125.3	np	np	112.1	
August	133.1	85.5	124.5	np	75.0	80.6	129.5	np	np	115.6	
September	129.4	82.5	133.4	np	68.7	79.6	127.8	np	np	114.2	
September Quarter	129.3	84.2	127.8	np	72.1	80.7	127.5	np	np	114.0	
AVERAGE TAKINGS PER AVAILABLE ROOM NIGHT (\$)											
2002											
September Quarter	78.5	46.9	76.2	np	np	51.2	77.2	np	48.6	66.5	
2003											
July	84.4	50.1	92.9	np	39.4	45.3	90.2	np	np	74.1	
August	101.1	51.8	88.8	np	40.1	50.2	95.2	np	np	80.0	
September	99.0	56.6	99.6	np	44.9	48.9	100.2	np	np	83.5	
September Quarter	94.8	52.8	93.7	np	41.5	48.1	95.1	np	np	79.2	

np not available for publication but included in totals where applicable, unless otherwise indicated

(a) Break in time series between the March and June quarters 2003. See Appendix 1 for details.

Period	South Coast	Illawarra	Sydney	Snowy Mountains	Capital Country	The Murray	Riverina	Explorer Country
ESTABLISHMENTS, CAPACITY AND EMPLOYMENT (a) (no.)								
September Quarter 2002								
Establishments	82	32	283	59	67	98	69	121
Guest rooms	1 999	1 123	31 329	2 381	2 126	2 838	1 971	3 509
Bed spaces	6 130	3 600	77 371	9 283	6 112	8 862	5 781	10 738
Persons employed	621	603	20 095	875	920	929	643	1 244
September Quarter 2003								
Establishments	80	33	294	60	67	98	70	124
Guest rooms	1 983	1 213	30 529	2 406	2 131	2 856	2 040	3 594
Bed spaces	5 911	3 566	74 409	9 135	6 052	8 767	5 909	10 583
Persons employed	651	623	19 431	872	828	982	672	1 241
ROOM NIGHTS OCCUPIED (a) ('000)								
2002								
September Quarter	71.6	53.4	1 875.4	140.2	97.3	121.0	99.2	177.0
2003								
July	25.0	17.3	672.6	54.2	33.0	39.5	30.8	62.1
August	24.5	16.5	683.1	51.3	32.3	39.5	31.1	58.7
September	28.0	19.0	688.6	33.5	36.2	46.0	36.4	65.9
September Quarter	77.5	52.8	2 044.3	138.9	101.5	125.0	98.3	186.6
ROOM OCCUPANCY RATE (%)								
2002								
September Quarter	38.9	51.7	65.2	64.0	49.7	46.4	54.7	54.8
2003								
July	40.6	46.0	71.5	72.6	49.9	44.7	48.6	55.7
August	39.8	43.8	72.6	68.8	48.8	44.6	49.1	52.7
September	47.1	52.3	75.3	46.4	56.7	53.7	59.5	61.1
September Quarter	42.5	47.3	73.1	62.8	51.8	47.6	52.4	56.4
GUEST NIGHTS (a) ('000)								
2002								
September Quarter	129.6	85.6	3 081.3	416.4	176.6	222.4	161.0	317.0
2003								
July	46.4	28.2	1 131.8	174.5	60.2	70.5	50.1	113.7
August	44.6	26.0	1 126.7	156.4	58.4	70.5	48.8	99.4
September	52.0	30.4	1 110.1	90.4	66.0	83.1	58.7	119.4
September Quarter	143.0	84.6	3 368.5	421.3	184.6	224.1	157.6	332.5
GUEST ARRIVALS (a) ('000)								
2002								
September Quarter	78.4	41.8	1 290.0	136.6	122.0	138.1	112.5	233.1
2003								
July	26.0	14.7	469.7	54.2	38.9	44.2	35.8	81.9
August	25.5	14.3	484.5	54.6	37.2	43.5	33.6	71.6
September	28.8	16.1	465.9	31.3	40.4	48.7	40.7	84.5
September Quarter	80.2	45.2	1 420.1	140.1	116.5	136.4	110.1	238.0
TAKINGS FROM ACCOMMODATION (a) (\$'000)								
2002								
September Quarter	5 412	5 580	259 162	28 521	9 385	9 483	7 947	13 843
2003								
July	1 940	1 967	92 512	12 602	3 278	3 129	2 550	5 149
August	1 922	1 863	96 301	13 289	3 253	3 149	2 578	4 799
September	2 232	2 189	98 995	5 953	3 576	3 746	3 055	5 497
September Quarter	6 094	6 019	287 808	31 843	10 107	10 025	8 182	15 446

(a) Break in time series between the March and June quarters 2003. See Appendix 1 for details.

Period	Hunter	North Coast NSW	Northern Rivers Tropical NSW	New England North West	Outback NSW	Central Coast	Blue Mountains
--------	--------	-----------------	------------------------------	------------------------	-------------	---------------	----------------

ESTABLISHMENTS, CAPACITY AND EMPLOYMENT (a) (no.)

September Quarter 2002

Establishments	101	123	76	92	38	39	32
Guest rooms	4 018	3 841	2 139	2 562	941	1 507	1 204
Bed spaces	12 498	11 965	6 719	7 638	2 709	4 856	3 329
Persons employed	2 315	1 661	676	837	273	885	945

September Quarter 2003

Establishments	104	130	80	95	38	39	32
Guest rooms	4 464	4 137	2 225	2 725	967	1 485	1 248
Bed spaces	13 864	13 378	6 974	8 039	2 806	4 635	3 269
Persons employed	2 587	1 714	704	823	268	753	760

ROOM NIGHTS OCCUPIED (a) ('000)

2002							
September Quarter	200.6	188.5	102.8	116.9	46.6	62.3	57.2
2003							
July	74.2	74.6	39.9	42.7	15.3	21.9	23.9
August	68.1	63.0	35.3	41.4	17.0	20.5	19.3
September	74.3	72.5	40.4	45.0	16.5	21.9	18.5
September Quarter	216.5	210.1	115.6	129.2	48.8	64.3	61.7

ROOM OCCUPANCY RATE (%)

2002							
September Quarter	54.3	53.3	52.3	49.6	53.8	45.0	51.7
2003							
July	53.6	58.5	57.9	50.5	50.9	47.5	62.6
August	49.2	49.1	51.2	49.1	56.7	44.6	50.6
September	55.4	58.4	60.5	55.1	56.9	49.2	50.1
September Quarter	52.7	55.3	56.5	51.5	54.8	47.1	54.5

GUEST NIGHTS (a) ('000)

2002							
September Quarter	363.1	378.0	192.0	202.7	77.2	123.0	104.2
2003							
July	141.7	156.3	78.8	74.7	25.8	43.4	46.2
August	123.0	123.2	65.6	68.4	26.6	37.7	34.5
September	137.5	155.9	79.0	77.5	27.1	43.1	33.8
September Quarter	402.2	435.3	223.4	220.6	79.5	124.2	114.5

GUEST ARRIVALS (a) ('000)

2002							
September Quarter	202.2	232.9	115.3	143.0	49.9	60.5	66.4
2003							
July	75.8	92.4	42.0	50.7	17.2	24.7	28.8
August	69.4	74.7	36.8	45.8	15.5	22.9	21.5
September	74.2	90.2	43.1	52.8	16.9	25.8	20.7
September Quarter	219.4	257.3	121.9	149.4	49.6	73.3	70.9

TAKINGS FROM ACCOMMODATION (a) (\$'000)

2002							
September Quarter	22 851	16 557	8 572	8 923	3 144	6 756	7 894
2003							
July	8 656	6 855	3 531	3 220	1 070	2 620	3 337
August	7 964	5 664	3 011	3 275	1 162	2 425	2 514
September	8 684	6 945	3 623	3 496	1 149	2 554	2 267
September Quarter	25 304	19 463	10 165	9 992	3 381	7 600	8 118

(a) Break in time series between the March and June quarters 2003. See Appendix 1 for details.

Period	Melbourne	Wimmera	Mallee	Western Western	Western Grampians	Bendigo Loddon	Peninsula	Central Murray	Goulburn	High Country
ESTABLISHMENTS, CAPACITY AND EMPLOYMENT (a) (no.)										
September Quarter 2002										
Establishments	244	6	41	53	19	30	20	23	27	73
Guest rooms	19 683	116	1 226	1 412	479	761	708	602	700	1 964
Bed spaces	49 845	333	3 673	4 348	1 370	2 286	1 879	1 701	2 008	6 887
Persons employed	15 376	30	459	718	201	353	377	172	363	808
September Quarter 2003										
Establishments	267	6	41	54	20	32	21	22	29	75
Guest rooms	21 155	116	1 226	1 425	491	824	715	580	798	2 060
Bed spaces	53 499	318	3 671	4 495	1 469	2 430	1 919	1 617	2 323	7 136
Persons employed	10 275	16	439	677	226	366	367	154	466	1 041
ROOM NIGHTS OCCUPIED (a) ('000)										
2002										
September Quarter	1 151.4	3.5	57.6	56.9	21.5	37.2	24.5	24.2	30.4	77.8
2003										
July	421.7	1.0	19.9	19.7	7.2	14.4	7.2	7.6	11.8	33.4
August	432.1	1.0	18.2	17.8	7.2	12.6	7.8	7.0	10.4	32.8
September	412.1	1.0	21.5	20.3	7.7	12.9	7.5	8.4	11.5	25.6
September Quarter	1 266.0	3.0	59.7	57.8	22.2	39.9	22.5	23.1	33.8	91.8
ROOM OCCUPANCY RATE (%)										
2002										
September Quarter	63.7	32.5	51.1	43.8	48.9	53.1	37.6	43.8	47.3	43.7
2003										
July	64.3	27.7	52.5	44.6	47.5	56.3	32.7	42.1	47.8	52.3
August	65.9	27.5	48.0	40.3	47.5	49.4	35.1	39.2	42.2	51.3
September	64.9	30.0	58.5	47.4	52.4	52.2	34.9	48.5	48.1	41.4
September Quarter	65.0	28.4	52.9	44.1	49.1	52.6	34.2	43.2	46.0	48.4
GUEST NIGHTS (a) ('000)										
2002										
September Quarter	1 875.8	5.3	95.4	104.7	35.2	65.0	41.4	39.9	45.2	204.3
2003										
July	700.7	1.6	33.3	37.4	11.0	25.4	12.3	13.4	17.9	88.5
August	698.5	1.5	27.7	31.3	11.0	20.6	12.8	12.2	15.6	84.0
September	667.0	1.6	35.4	37.9	11.9	21.0	13.2	14.5	17.2	63.2
September Quarter	2 066.2	4.8	96.4	106.6	33.9	67.0	38.4	40.1	50.7	235.7
GUEST ARRIVALS (a) ('000)										
2002										
September Quarter	820.3	4.3	63.2	64.9	27.4	42.6	22.8	25.8	30.5	96.4
2003										
July	294.5	1.4	20.5	23.5	8.4	15.5	5.8	9.1	11.7	34.1
August	303.1	1.3	17.6	20.5	8.3	13.3	6.9	8.7	10.4	34.6
September	285.5	1.2	22.4	22.7	8.9	13.1	6.6	10.0	11.3	27.0
September Quarter	883.1	3.8	60.6	66.7	25.6	41.8	19.3	27.8	33.5	95.7
TAKINGS FROM ACCOMMODATION (a) (\$'000)										
2002										
September Quarter	158 633	206	4 441	5 145	1 822	3 390	2 771	1 943	2 447	13 422
2003										
July	55 221	63	1 556	1 837	614	1 417	822	600	1 013	6 437
August	57 446	63	1 425	1 617	597	1 191	961	552	875	7 120
September	55 981	68	1 650	1 873	651	1 175	879	646	965	3 696
September Quarter	168 648	194	4 631	5 326	1 862	3 784	2 663	1 798	2 854	17 253

(a) Break in time series between the March and June quarters 2003. See Appendix 1 for details.

Period	Lakes	Gippsland	Melbourne East	Geelong	Macedon	Spa Country	Ballarat	Central Highlands	Upper Yarra	Murray East	Phillip Island
ESTABLISHMENTS, CAPACITY AND EMPLOYMENT (a) (no.)											
September Quarter 2002											
Establishments	23	34	14	23	3	5	25	15	11	15	11
Guest rooms	616	1 007	481	803	72	126	872	359	386	436	375
Bed spaces	1 784	2 884	1 197	2 189	163	327	2 718	1 157	996	1 157	1 331
Persons employed	231	320	476	412	48	131	448	98	202	113	129
September Quarter 2003											
Establishments	23	33	14	25	4	6	24	14	11	16	11
Guest rooms	613	998	482	837	95	147	829	326	385	465	375
Bed spaces	1 798	2 834	1 286	2 329	261	361	2 581	990	995	1 223	1 315
Persons employed	241	293	498	493	67	175	411	94	219	147	117
ROOM NIGHTS OCCUPIED (a) ('000)											
2002											
September Quarter	16.1	33.1	14.0	33.6	2.4	5.8	37.1	12.0	10.4	13.5	9.5
2003											
July	5.9	11.3	5.1	12.3	1.1	2.5	13.3	3.8	3.1	5.1	3.8
August	5.7	11.0	5.8	12.1	1.1	2.1	12.4	3.1	3.1	5.4	3.4
September	7.0	11.9	5.1	12.5	1.0	2.2	13.7	4.3	3.0	6.2	3.8
September Quarter	18.5	34.2	16.0	36.8	3.2	6.8	39.4	11.2	9.2	16.6	11.0
ROOM OCCUPANCY RATE (%)											
2002											
September Quarter	28.9	35.7	31.7	45.5	36.1	50.0	46.2	36.4	29.3	33.7	27.6
2003											
July	30.8	36.6	33.8	47.2	36.0	54.0	51.7	37.5	25.6	35.4	32.5
August	29.8	35.6	38.9	46.7	38.5	45.9	48.4	30.7	26.3	37.4	29.4
September	37.8	39.6	35.3	49.6	35.2	50.7	55.1	44.3	26.2	44.1	33.8
September Quarter	32.8	37.2	36.0	47.8	36.6	50.2	51.7	37.4	26.1	38.9	31.9
GUEST NIGHTS (a) ('000)											
2002											
September Quarter	27.5	46.7	22.1	51.8	2.8	9.6	73.1	24.3	16.8	22.6	23.1
2003											
July	11.0	17.2	8.2	18.8	1.3	4.2	27.5	7.0	5.0	9.0	9.1
August	10.3	16.2	8.9	18.4	1.3	3.6	23.8	5.4	4.9	8.5	7.8
September	13.5	17.0	7.9	20.1	1.2	3.9	28.8	8.1	4.7	10.7	9.3
September Quarter	34.8	50.4	25.0	57.3	3.7	11.7	80.1	20.5	14.5	28.2	26.2
GUEST ARRIVALS (a) ('000)											
2002											
September Quarter	20.6	29.7	11.6	27.1	1.6	5.8	42.3	15.1	8.9	15.2	13.8
2003											
July	8.1	10.6	4.1	10.9	0.8	2.2	16.6	4.4	2.9	5.8	5.2
August	7.8	10.2	4.8	11.0	0.9	2.0	12.6	4.0	3.0	5.3	4.6
September	10.1	10.1	4.6	11.7	1.0	2.1	15.4	5.5	2.6	6.6	5.4
September Quarter	26.0	30.9	13.6	33.6	2.7	6.4	44.6	13.8	8.5	17.7	15.3
TAKINGS FROM ACCOMMODATION (a) (\$'000)											
2002											
September Quarter	1 296	2 402	1 754	2 850	254	944	3 336	925	1 102	1 013	944
2003											
July	526	880	623	1 228	112	454	1 225	308	442	378	385
August	503	818	692	1 196	149	374	1 146	276	380	391	358
September	647	895	612	1 312	131	407	1 247	348	418	479	406
September Quarter	1 677	2 593	1 927	3 736	392	1 235	3 618	932	1 240	1 249	1 149

(a) Break in time series between the March and June quarters 2003. See Appendix 1 for details.

Period	Gold Coast	Brisbane	Sunshine Coast	Hervey Bay/Maryborough	Darling Downs	Bundaberg	Fitzroy
ESTABLISHMENTS, CAPACITY AND EMPLOYMENT (a) (no.)							
September Quarter 2002							
Establishments	147	159	101	44	63	27	85
Guest rooms	13 199	9 617	4 614	1 607	1 604	694	3 168
Bed spaces	42 639	26 712	15 766	5 489	4 996	2 188	9 559
Persons employed	8 204	6 509	2 329	717	606	243	1 525
September Quarter 2003							
Establishments	158	160	100	46	65	29	87
Guest rooms	13 263	9 735	4 757	1 829	1 654	737	3 274
Bed spaces	42 666	28 272	16 355	5 763	5 029	2 309	9 899
Persons employed	8 592	6 559	2 282	862	607	280	1 604
ROOM NIGHTS OCCUPIED (a) ('000)							
2002							
September Quarter	782.8	663.8	266.6	78.8	85.8	36.5	184.5
2003							
July	264.6	240.5	103.0	30.1	28.4	14.9	64.1
August	255.6	227.0	101.7	31.6	27.9	12.8	64.7
September	283.7	215.5	105.5	30.8	34.0	13.9	67.0
September Quarter	803.9	682.9	310.1	92.5	90.3	41.6	195.8
ROOM OCCUPANCY RATE (%)							
2002							
September Quarter	64.5	75.0	62.8	53.3	58.1	57.2	63.3
2003							
July	64.4	79.8	69.8	53.0	56.1	65.3	63.2
August	62.2	75.2	68.9	55.8	55.1	55.9	63.7
September	71.3	73.8	73.9	56.1	68.9	62.9	68.2
September Quarter	65.9	76.3	70.9	55.0	60.0	61.3	65.0
GUEST NIGHTS (a) ('000)							
2002							
September Quarter	1 766.8	1 055.2	640.4	152.9	148.9	66.4	300.4
2003							
July	623.7	393.4	249.8	56.3	50.2	27.8	106.6
August	560.0	364.3	231.3	55.8	48.6	21.6	101.3
September	664.6	346.2	267.6	59.1	60.7	25.5	114.6
September Quarter	1 848.3	1 103.9	748.7	171.2	159.5	74.9	322.5
GUEST ARRIVALS (a) ('000)							
2002							
September Quarter	490.4	457.8	181.8	83.8	98.1	41.6	156.7
2003							
July	165.6	155.3	64.9	28.4	35.2	18.0	54.1
August	149.5	153.5	63.4	29.4	33.9	14.2	51.9
September	174.0	145.7	67.8	30.7	39.5	15.6	58.4
September Quarter	489.1	454.5	196.1	88.5	108.6	47.8	164.4
TAKINGS FROM ACCOMMODATION (a) (\$'000)							
2002							
September Quarter	80 610	70 884	30 936	6 031	6 688	2 937	14 752
2003							
July	26 907	26 870	11 271	2 320	2 193	1 277	5 388
August	26 332	25 330	11 649	2 585	2 149	1 015	5 488
September	31 519	23 740	13 195	2 613	2 657	1 143	5 842
September Quarter	84 758	75 940	36 115	7 518	6 999	3 434	16 717

(a) Break in time series between the March and June quarters 2003. See Appendix 1 for details.

<i>Period</i>	<i>Mackay</i>	<i>Whitsundays</i>	<i>Northern</i>	<i>Tropical North Queensland</i>	<i>Outback</i>	<i>Great Barrier Reef(a)</i>
ESTABLISHMENTS, CAPACITY AND EMPLOYMENT (b) (no.)						
September Quarter 2002						
Establishments	50	28	46	159	55	17
Guest rooms	1 623	2 658	2 151	10 194	1 499	2 707
Bed spaces	4 648	8 998	6 241	30 480	4 279	8 458
Persons employed	879	2 333	1 305	5 790	589	2 716
September Quarter 2003						
Establishments	53	30	51	176	55	18
Guest rooms	1 728	2 699	2 366	11 246	1 479	2 748
Bed spaces	5 115	9 444	6 882	32 915	4 190	9 372
Persons employed	946	2 272	1 328	5 906	518	2 743
ROOM NIGHTS OCCUPIED (b) ('000)						
2002						
<i>September Quarter</i>	99.9	139.2	136.4	671.5	84.5	149.9
2003						
July	38.1	49.7	59.3	250.9	31.0	53.0
August	38.3	52.0	54.4	258.0	27.4	53.7
September	35.5	56.0	49.9	243.7	25.2	57.8
<i>September Quarter</i>	111.9	157.8	163.6	752.6	83.6	164.5
ROOM OCCUPANCY RATE (%)						
2002						
<i>September Quarter</i>	66.9	56.9	68.9	71.6	61.3	60.2
2003						
July	71.1	59.4	80.8	72.2	67.6	62.3
August	71.8	62.1	74.1	74.0	59.8	63.0
September	69.2	69.2	70.3	72.2	56.8	70.1
<i>September Quarter</i>	70.7	63.5	75.2	72.8	61.5	65.0
GUEST NIGHTS (b) ('000)						
2002						
<i>September Quarter</i>	162.7	320.9	216.2	1 408.2	132.2	329.1
2003						
July	63.4	117.7	94.0	538.5	48.4	123.2
August	57.5	110.5	82.8	539.3	42.7	109.6
September	63.2	133.7	77.9	502.4	39.0	139.8
<i>September Quarter</i>	184.1	361.9	254.6	1 580.2	130.0	372.6
GUEST ARRIVALS (b) ('000)						
2002						
<i>September Quarter</i>	76.8	100.7	105.3	398.6	82.4	80.2
2003						
July	28.8	36.2	42.7	146.5	30.5	27.3
August	27.9	35.6	40.5	147.2	26.5	26.8
September	28.6	40.3	37.7	137.3	23.7	32.6
<i>September Quarter</i>	85.3	112.2	120.9	431.0	80.7	86.7
TAKINGS FROM ACCOMMODATION (b) (\$'000)						
2002						
<i>September Quarter</i>	8 687	22 573	12 368	90 253	6 448	31 074
2003						
July	3 711	7 859	5 564	33 242	2 415	10 794
August	3 931	9 553	5 093	35 018	2 092	12 900
September	3 490	10 265	4 655	32 251	1 947	13 121
<i>September Quarter</i>	11 132	27 676	15 312	100 510	6 455	36 816

(a) Includes those parts of other Tourism Regions which fall within the Great Barrier Reef geographic area. Data are not included in Queensland totals.

(b) Break in time series between the March and June quarters 2003. See Appendix 1 for details.

Period	Limestone Coast	Murraylands	Fleurieu Peninsula	Adelaide	Adelaide Hills	Barossa	Riverland	Clare Valley	Flinders Ranges	Outback SA
ESTABLISHMENTS, CAPACITY AND EMPLOYMENT (a) (no.)										
September Quarter 2002										
Establishments	34	4	14	92	4	9	14	4	18	8
Guest rooms	981	96	497	6 262	133	368	498	126	636	383
Bed spaces	2 943	308	1 552	16 985	333	1 047	1 524	399	1 917	1 060
Persons employed	428	45	241	3 696	130	321	509	76	307	178
September Quarter 2003										
Establishments	34	4	15	95	4	9	14	4	20	9
Guest rooms	999	96	499	6 534	132	363	480	128	683	656
Bed spaces	2 898	302	1 517	17 758	396	1 000	1 402	400	1 980	1 593
Persons employed	452	41	333	3 797	120	310	553	83	339	202
ROOM NIGHTS OCCUPIED (a) ('000)										
2002										
September Quarter	39.5	4.5	12.4	348.1	5.9	16.1	24.3	8.3	32.8	18.5
2003										
July	14.3	1.5	4.8	119.8	1.9	6.0	6.3	2.1	11.3	7.0
August	13.5	1.6	5.8	123.8	2.0	6.1	6.9	2.4	10.9	7.0
September	16.8	1.7	5.6	132.0	1.9	5.6	7.4	2.7	12.9	6.4
September Quarter	44.6	4.7	16.2	375.6	5.8	17.7	20.6	7.1	35.0	20.4
ROOM OCCUPANCY RATE (%)										
2002										
September Quarter	43.7	50.6	27.2	60.7	47.9	47.5	53.1	72.0	56.1	52.4
2003										
July	46.2	50.3	31.2	59.1	46.1	53.5	42.4	52.3	55.1	34.4
August	43.7	52.5	37.3	61.1	48.4	53.8	46.3	59.3	53.1	34.4
September	55.9	57.8	37.3	67.3	48.0	51.5	51.5	70.6	63.9	32.7
September Quarter	48.5	53.5	35.3	62.5	47.5	52.9	46.7	60.6	57.4	33.8
GUEST NIGHTS (a) ('000)										
2002										
September Quarter	60.7	7.0	26.1	558.2	12.0	28.7	38.6	13.5	54.8	31.0
2003										
July	22.2	2.4	10.3	188.6	3.7	10.8	10.1	3.7	19.1	11.7
August	19.7	2.5	12.0	187.1	3.5	10.5	10.9	3.9	17.3	10.4
September	25.2	3.5	11.9	206.4	3.8	10.5	11.9	4.9	21.4	9.9
September Quarter	67.1	8.4	34.2	582.0	11.1	31.9	33.0	12.5	57.9	32.1
GUEST ARRIVALS (a) ('000)										
2002										
September Quarter	38.6	4.8	15.1	232.5	5.9	16.5	24.9	8.4	36.4	23.1
2003										
July	13.4	1.4	5.8	85.3	1.7	6.5	6.9	2.7	12.0	7.7
August	11.7	1.6	6.7	87.5	1.8	6.1	7.4	2.8	11.2	6.5
September	15.1	2.0	6.7	91.6	1.8	6.3	7.9	3.3	14.2	6.1
September Quarter	40.2	5.0	19.1	264.4	5.2	18.8	22.3	8.7	37.4	20.3
TAKINGS FROM ACCOMMODATION (a) (\$'000)										
2002										
September Quarter	2 942	297	1 050	38 439	630	1 784	1 693	723	2 359	1 527
2003										
July	1 061	101	404	13 624	190	541	474	201	798	582
August	972	106	492	14 297	206	616	511	234	784	543
September	1 207	113	506	15 346	191	588	550	275	985	545
September Quarter	3 240	320	1 402	43 267	587	1 745	1 535	710	2 567	1 670

(a) Break in time series between the March and June quarters 2003. See Appendix 1 for details.

<i>Period</i>	<i>Eyre Peninsula</i>	<i>Yorke Peninsula</i>	<i>Kangaroo Island</i>
---------------	-----------------------	------------------------	------------------------

ESTABLISHMENTS, CAPACITY AND EMPLOYMENT (a) (no.)

September Quarter 2002

Establishments	23	8	5
Guest rooms	751	149	151
Bed spaces	2 112	474	398
Persons employed	514	71	99

September Quarter 2003

Establishments	24	8	6
Guest rooms	773	149	194
Bed spaces	2 201	458	506
Persons employed	567	76	105

ROOM NIGHTS OCCUPIED (a) ('000)

2002

<i>September Quarter</i>	35.4	4.3	5.6
--------------------------	------	-----	-----

2003

July	10.8	1.3	2.0
August	11.7	1.4	2.5
September	12.3	1.5	2.7
<i>September Quarter</i>	34.8	4.2	7.2

ROOM OCCUPANCY RATE (%)

2002

<i>September Quarter</i>	51.2	31.0	40.0
--------------------------	------	------	------

2003

July	45.1	28.4	33.4
August	48.8	29.4	41.0
September	52.9	33.4	47.2
<i>September Quarter</i>	48.9	30.4	40.5

GUEST NIGHTS (a) ('000)

2002

<i>September Quarter</i>	50.0	6.6	10.3
--------------------------	------	-----	------

2003

July	15.8	2.0	4.0
August	17.2	2.0	4.8
September	18.2	2.1	5.3
<i>September Quarter</i>	51.1	6.2	14.0

GUEST ARRIVALS (a) ('000)

2002

<i>September Quarter</i>	34.5	4.5	5.0
--------------------------	------	-----	-----

2003

July	9.9	1.3	1.6
August	11.2	1.4	2.0
September	12.5	1.4	2.4
<i>September Quarter</i>	33.6	4.1	6.0

TAKINGS FROM ACCOMMODATION (a) (\$'000)

2002

<i>September Quarter</i>	2 594	283	532
--------------------------	-------	-----	-----

2003

July	782	93	192
August	857	91	234
September	885	99	268
<i>September Quarter</i>	2 524	283	695

(a) Break in time series between the March and June quarters 2003.
See Appendix 1 for details.

Period	South								Great		
	East	Goldfields	Midwest	Gascoyne	Pilbara	Kimberley	Perth	Peel	West	Southern	Wheatbelt
ESTABLISHMENTS, CAPACITY AND EMPLOYMENT (a) (no.)											
September Quarter 2002											
Establishments	10	22	25	12	18	29	98	7	61	21	23
Guest rooms	297	999	871	519	1 370	1 691	9 313	345	2 490	790	621
Bed spaces	918	2 596	2 357	1 421	2 826	4 782	26 067	1 222	7 748	2 348	1 541
Persons employed	126	403	367	219	476	712	5 333	158	1 181	305	283
September Quarter 2003											
Establishments	12	24	24	12	20	30	110	7	63	22	21
Guest rooms	341	1 106	844	542	1 494	1 689	9 844	349	2 564	820	592
Bed spaces	1 000	2 918	2 317	1 604	2 972	4 696	27 317	1 208	7 884	2 489	1 538
Persons employed	145	404	349	259	514	822	5 522	160	1 133	324	228
ROOM NIGHTS OCCUPIED (a) ('000)											
2002											
September Quarter	11.4	48.7	46.5	29.9	67.4	106.0	533.0	11.0	96.3	26.2	21.4
2003											
July	3.3	18.2	13.8	12.4	27.2	40.2	189.9	4.2	33.8	7.9	6.9
August	3.7	18.3	16.5	11.8	28.4	41.7	185.8	4.1	30.1	7.6	7.1
September	6.4	21.5	18.2	10.2	27.2	33.3	212.0	4.3	37.3	12.3	10.0
September Quarter	13.4	57.9	48.4	34.4	82.8	115.1	587.7	12.5	101.1	27.7	24.0
ROOM OCCUPANCY RATE (%)											
2002											
September Quarter	41.8	53.0	58.0	64.4	53.5	68.1	62.3	34.8	42.6	36.0	37.9
2003											
July	30.9	53.0	52.6	73.6	58.7	76.8	63.5	38.7	42.5	30.9	37.5
August	35.0	53.2	63.0	70.4	61.4	79.6	61.0	37.5	37.9	29.7	38.8
September	62.8	64.8	71.7	62.6	60.7	65.6	71.9	41.1	48.4	50.0	56.1
September Quarter	42.7	56.9	62.3	69.0	60.3	74.1	65.4	39.1	42.9	36.7	44.0
GUEST NIGHTS (a) ('000)											
2002											
September Quarter	18.1	71.2	76.6	52.3	84.7	196.4	888.2	27.7	201.7	42.1	30.1
2003											
July	5.8	25.2	23.7	25.5	35.2	82.5	326.0	9.6	72.8	13.5	9.6
August	5.7	25.5	26.1	20.3	37.5	80.1	305.1	8.3	58.8	12.4	10.1
September	11.0	33.0	29.1	17.1	36.0	66.9	362.3	9.1	76.0	21.0	14.3
September Quarter	22.5	83.7	78.9	62.9	108.7	229.5	993.3	27.0	207.7	46.9	34.1
GUEST ARRIVALS (a) ('000)											
2002											
September Quarter	10.7	37.0	44.6	24.0	32.1	65.2	348.9	12.8	98.0	26.3	22.5
2003											
July	3.0	13.6	15.0	12.6	12.4	26.7	123.2	5.0	32.0	7.8	6.6
August	3.3	13.1	15.5	10.4	13.0	26.0	121.2	4.8	29.3	7.2	7.4
September	6.2	16.7	20.0	9.6	12.6	20.1	135.7	5.1	37.1	12.3	10.5
September Quarter	12.4	43.4	50.5	32.6	38.0	72.9	380.0	14.9	98.4	27.2	24.4
TAKINGS FROM ACCOMMODATION (a) (\$'000)											
2002											
September Quarter	838	4 360	3 636	2 328	5 734	14 162	56 860	1 048	9 589	2 332	1 449
2003											
July	278	1 517	1 137	991	2 638	5 968	20 826	412	3 563	733	466
August	298	1 697	1 328	893	2 805	6 192	20 570	356	3 194	694	477
September	479	1 898	1 428	730	2 859	4 946	23 896	428	4 223	1 099	690
September Quarter	1 054	5 112	3 894	2 615	8 302	17 106	65 291	1 196	10 980	2 526	1 633

(a) Break in time series between the March and June quarters 2003. See Appendix 1 for details.

<i>Period</i>	<i>Greater Hobart</i>	<i>Southern</i>	<i>East Coast</i>	<i>Northern</i>	<i>Greater Launceston</i>	<i>North West</i>	<i>West Coast</i>
ESTABLISHMENTS, CAPACITY AND EMPLOYMENT (a) (no.)							
September Quarter 2002							
Establishments	42	6	13	4	31	33	10
Guest rooms	2 186	155	495	119	1 373	1 005	371
Bed spaces	6 014	490	1 713	439	4 335	2 934	1 096
Persons employed	1 679	70	270	46	1 049	540	172
September Quarter 2003							
Establishments	45	6	12	4	32	33	11
Guest rooms	2 351	155	450	122	1 397	1 067	459
Bed spaces	6 337	500	1 562	462	4 427	3 255	1 275
Persons employed	1 716	75	236	44	1 133	600	271
ROOM NIGHTS OCCUPIED (a) ('000)							
2002							
<i>September Quarter</i>	97.0	3.5	11.2	2.7	53.0	30.6	9.3
2003							
July	33.6	1.1	2.9	1.4	17.1	12.1	2.5
August	40.8	1.0	3.3	1.3	19.0	9.9	2.3
September	42.9	1.8	4.5	1.1	21.7	12.4	5.0
<i>September Quarter</i>	117.2	3.9	10.7	3.8	57.9	34.5	9.8
ROOM OCCUPANCY RATE (%)							
2002							
<i>September Quarter</i>	48.3	26.2	24.7	25.1	42.0	33.1	27.3
2003							
July	46.1	23.8	20.7	36.1	39.6	36.7	17.4
August	55.9	20.9	23.5	34.6	44.0	30.1	16.6
September	60.8	38.6	33.4	30.2	51.9	38.7	36.5
<i>September Quarter</i>	54.2	27.6	25.8	33.7	45.1	35.1	23.5
GUEST NIGHTS (a) ('000)							
2002							
<i>September Quarter</i>	165.6	7.9	22.9	6.8	90.9	47.3	16.0
2003							
July	56.0	2.7	5.9	3.6	27.5	19.3	4.4
August	66.0	2.3	6.5	3.2	31.2	15.0	4.1
September	75.8	4.3	9.8	2.9	38.7	20.5	9.7
<i>September Quarter</i>	197.7	9.2	22.2	9.7	97.4	54.8	18.2
GUEST ARRIVALS (a) ('000)							
2002							
<i>September Quarter</i>	70.2	5.8	15.9	4.1	47.4	28.7	10.6
2003							
July	25.2	1.9	4.1	1.5	16.4	9.7	2.9
August	27.6	1.5	4.4	1.5	18.2	8.6	2.8
September	32.5	2.8	6.8	1.5	22.7	12.5	6.6
<i>September Quarter</i>	85.2	6.2	15.2	4.4	57.3	30.9	12.3
TAKINGS FROM ACCOMMODATION (a) (\$'000)							
2002							
<i>September Quarter</i>	9 668	303	964	245	4 650	2 706	740
2003							
July	3 584	96	294	77	1 565	1 120	222
August	4 432	90	336	78	1 795	900	222
September	4 826	158	471	94	2 030	1 176	495
<i>September Quarter</i>	12 842	344	1 101	249	5 390	3 196	940

(a) Break in time series between the March and June quarters 2003. See Appendix 1 for details.

Period	Darwin	Kakadu	Arnhem	Katherine	Table-lands	Peter-mann	Alice Springs	Mac-Donnell	Daly	Canberra
--------	--------	--------	--------	-----------	-------------	------------	---------------	-------------	------	----------

ESTABLISHMENTS, CAPACITY AND EMPLOYMENT (a) (no.)

September Quarter 2002

Establishments	35	4	3	10	6	7	22	2	1	60
Guest rooms	2 652	320	82	547	np	np	1 613	np	np	5 156
Bed spaces	7 802	1 009	280	1 529	np	np	4 989	np	np	15 114
Persons employed	1 373	193	59	195	np	np	767	np	np	2 294

September Quarter 2003

Establishments	35	4	3	10	7	8	23	—	—	59
Guest rooms	2 649	306	83	558	np	np	1 718	—	—	5 069
Bed spaces	7 739	1 023	284	1 512	np	np	5 479	—	—	14 206
Persons employed	1 310	257	42	160	np	np	851	—	—	2 824

ROOM NIGHTS OCCUPIED (a) ('000)

2002										
September Quarter	194.5	17.9	3.5	31.1	np	np	93.6	np	np	293.5
2003										
July	72.2	7.1	1.1	11.9	np	np	36.0	—	—	103.9
August	66.4	6.7	1.4	10.5	np	np	37.2	—	—	108.6
September	54.9	5.3	1.4	8.5	np	np	35.8	—	—	109.9
September Quarter	193.5	19.1	4.0	30.9	np	np	109.0	—	—	322.4

ROOM OCCUPANCY RATE (%)

2002										
September Quarter	79.7	60.7	46.6	61.9	np	np	63.1	np	np	61.9
2003										
July	88.0	75.0	44.2	68.9	np	np	67.7	—	—	66.1
August	80.8	70.6	55.6	60.7	np	np	69.9	—	—	69.2
September	69.0	57.4	57.5	50.5	np	np	69.4	—	—	73.1
September Quarter	79.4	67.8	52.3	60.2	np	np	69.0	—	—	69.4

GUEST NIGHTS (a) ('000)

2002										
September Quarter	330.9	35.3	5.9	55.0	np	np	171.5	np	np	520.3
2003										
July	127.1	14.3	1.8	21.8	np	np	64.6	—	—	190.3
August	114.1	13.0	2.2	18.6	np	np	60.4	—	—	185.6
September	90.8	9.7	2.2	15.1	np	np	59.3	—	—	185.1
September Quarter	332.0	37.1	6.1	55.5	np	np	184.3	—	—	561.0

GUEST ARRIVALS (a) ('000)

2002										
September Quarter	124.1	24.8	2.8	39.2	np	np	79.2	np	np	213.5
2003										
July	48.2	9.3	0.8	15.6	np	np	31.5	—	—	76.4
August	44.4	8.6	0.9	13.1	np	np	29.5	—	—	78.3
September	36.5	6.0	0.9	10.5	np	np	29.2	—	—	76.5
September Quarter	129.1	23.9	2.6	39.3	np	np	90.2	—	—	231.2

TAKINGS FROM ACCOMMODATION (a) (\$'000)

2002										
September Quarter	23 070	2 787	624	2 314	np	np	8 083	np	np	31 546
2003										
July	9 046	1 064	194	1 004	np	np	2 977	—	—	11 651
August	8 536	1 047	265	903	np	np	3 107	—	—	12 557
September	6 241	781	245	717	np	np	2 987	—	—	12 554
September Quarter	23 822	2 891	704	2 625	np	np	9 071	—	—	36 762

— nil or rounded to zero (including null cells)

(a) Break in time series between the March and June quarters. See

np not available for publication but included in totals where applicable, unless otherwise indicated

Appendix 1 for details.

EXPLANATORY NOTES

INTRODUCTION

1 This publication presents data from the quarterly Survey of Tourist Accommodation (STA). The STA is a mailout collection that completely enumerates all in-scope accommodation establishments within Australia.

SCOPE

2 On a quarterly basis the STA includes hotels, motels, guest houses and serviced apartments with 15 or more rooms or units.

3 For 2003 the scope of the STA has been expanded to include:

- holiday flats, units and houses of letting entities with 15 or more rooms or units
- caravan parks with 40 or more powered sites
- visitor hostels with 25 or more bed spaces.

4 Short-term non-residential accommodation, which is in scope of the STA, is accommodation which is not leased, and which is provided to guests who would generally stay for periods of less than two months.

5 Some establishments also provide long-term residential accommodation. For hotels, motels, guest houses and serviced apartments, the amount of such activity is considered to be insignificant and is included in the data presented in this publication.

DEFINITIONS OF ACCOMMODATION ESTABLISHMENTS

6 For 2003 the STA includes the following categories of establishments which provide predominantly short-term non-residential accommodation to the general public:

- hotels and resorts with facilities - establishments with 15 or more rooms which are licensed to operate a public bar and which provide accommodation on a room/suite basis, with a bath/shower and toilet in most guest rooms, but which do not have full cooking facilities (i.e. hot plates and oven/microwave) in most guest rooms
- motels, private hotels and guest houses with facilities - establishments with 15 or more rooms which are not licensed to operate a public bar, and which provide accommodation on a room/suite basis, with a bath/shower and toilet in most guest rooms, but which do not have full cooking facilities (i.e. hot plates and oven/microwave) in most guest rooms
- serviced apartments - establishments with 15 or more units which mostly comprise self-contained units at the same location, and which are available on a unit/apartment basis to the general public for a minimum of one night. The units should have full cooking facilities (i.e. hot plates and oven/microwave), refrigerator and bath/shower and toilet facilities; all bed linen and towels should be provided, and daily servicing (i.e. cleaning and bed making) must be available through the on-site management, although this service may not necessarily be used
- holiday flats, units and houses - (excluding establishments predominantly operated on a time-share basis) which are operated by owners, managers or real estate agents who have sole letting rights to at least 15 flats, units or houses for short-term letting. These flats, units or houses should be mainly self-contained in terms of cooking, bath (or shower) and toilet facilities and should not have breakfast available for guests. Data for holiday flats units or houses include short-term owner operators as well as paying guest occupation
- caravan parks - establishments with 40 or more powered sites and cabins which provide either short-term or long-term accommodation to the general public and which provide powered sites for caravans and toilet, shower and laundry facilities for guests
- visitor hostels - establishments with 25 or more bed spaces which provide accommodation to visitors on a bed basis (rather than by room). This category does not include establishments providing charity type accommodation (e.g. Salvation Army hostels) nor hotels, motels and guest houses without in-room facilities which provide accommodation on a per room basis.

EXPLANATORY NOTES *continued*

COVERAGE

7 The ABS has collected data for holiday flats, units and houses, caravan parks and visitor hostels for the September quarter 2003. These data will be released along with June and December quarters 2003 after December quarter 2003 data has been collected and processed.

8 The main source of coverage is from the Australian Automobile Association through AAA Tourism. This is supplemented by notification of new tourism developments and their likely opening dates in selected guides, major tourism journals and periodicals and newspapers. Periodic comparison with lists of accommodation establishments provided by the various tourism commissions and industry associations is also undertaken.

DATA QUALITY

9 The survey does not have a sample component and the data are not subject to sampling variability. However, other inaccuracies collectively referred to as non-sampling error may affect the data. These non-sampling errors may arise from a number of sources, including:

- errors in the reporting of data by providers
- errors in the process of capturing data
- estimation for missing data
- definition and classification errors
- incomplete coverage.

10 Every effort has been made to reduce non-sampling error to a minimum by careful design and testing of questionnaires, and efficient operating procedures and systems used to compile statistics.

11 The September quarter 2003 response rates were:

- 91% licensed hotels
- 91% motels and guest houses
- 92% serviced apartments.

BREAK IN TIME SERIES

12 In the June quarter 2003 the ABS identified 132 hotels, motels and guest houses and serviced apartments which had been operating for a number of quarters but were not on the STA frame. These additional establishments were included in the STA from the June quarter 2003.

13 The addition of the 132 tourism establishments resulted in a break in time series between the March and June quarters 2003. The impact of the break in time series is explained in Appendix 1. Particular care needs to be taken when calculating percentage changes between the June quarter 2003 and previous quarters.

TAKINGS FROM ACCOMMODATION

14 From 1 July 2000, takings from accommodation include gross revenue from the provision of accommodation, including GST. Takings from meals are excluded. Where businesses are unable to provide the data inclusive of GST, it is automatically adjusted by the ABS prior to aggregation and release in output.

STATISTICAL GEOGRAPHY

15 Small area statistics for 2003 are classified to the *Australia Standard Geographical Classification (ASGC), 2001 Edition* (cat. no. 1216.0). Data are coded to the statistical local area (SLA) level.

16 These SLA data are aggregated to tourism regions as defined by relevant state and territory tourist commissions. Tourism regions are reviewed annually and are subject to boundary and name changes. Where changes have occurred care should be taken when making comparisons with previously published data at this level.

17 Details of SLAs, the composition of tourism regions, major changes to tourism regions and outline maps of tourism regions are provided on the Tourism Theme Page of the ABS web site <www.abs.gov.au>.

EXPLANATORY NOTES *continued*

SEASONAL ADJUSTMENT

18 Seasonal adjustment is a means of removing the estimated effects of normal seasonal variation from the original time series so that the effect of other influences on the series may be more clearly recognised. Seasonal adjustment procedures do not aim to remove the irregular or non-seasonal influences which may be present in any particular month. Irregular influences that are highly volatile can make it difficult to interpret the movement of the series even after adjustment for seasonal variation, and cannot be assumed to indicate changes in the trend.

19 The way in which seasonally adjusted and trend estimates were calculated changed from a Forward Factor methodology to a Concurrent methodology in March quarter 2003. The Forward Factor method relied on an annual analysis of the original time series to estimate seasonal factors that were to be applied in the forthcoming four quarters. Under this method the projected seasonal factors, or forward factors, were not updated until the next annual analysis. The Concurrent methodology uses the most up to date original time series available at each reference period to estimate seasonal factors thus eliminating the need to use projected seasonal factors.

TREND ESTIMATES

20 Smoothing the seasonally adjusted series reduces the impact of the irregular component of the seasonally adjusted series and creates the trend estimates. The trend estimates are derived by applying a 7-term Henderson moving average to the quarterly seasonally adjusted series. The Henderson moving average used in the middle of the time series is symmetric but, as the end of a time series is approached, asymmetric forms of the symmetric moving average are applied. Unlike the weights of the standard 7-term Henderson moving average, the weights used with the quarterly data have been tailored to suit the particular characteristics of individual series.

21 While these techniques enable trend estimates for the latest period to be produced, the process does result in revisions to the trend estimates in recent months, particularly as additional original estimates become available. For further information refer to *Information Paper: A Guide to Interpreting Time Series - Monitoring Trends, 2003* (cat. no. 1349.0) available at the ABS web site <www.abs.gov.au>.

EFFECTS OF ROUNDING

22 Where figures have been rounded, discrepancies may occur between totals and the sum of the component items.

RELATED PUBLICATIONS

23 Other ABS publications and products which may be of interest are outlined below. Please note, older publications may no longer be available through ABS bookshops but are available through ABS libraries. All publications released from 1998 onwards are available on the ABS web site <www.abs.gov.au> (charges apply).

Directory of Tourism Statistics, 2001 cat. no. 1130.0 (irregular)

Overseas Arrivals and Departures, Australia cat. no. 3401.0 (issued monthly)

Short-term Visitor Arrivals to Australia, Preliminary cat. no. 3401.0.55.001 (issued monthly)

Tourism Indicators, Australia cat. no. 8634.0 (discontinued from September quarter 2002 - previously issued quarterly)

Electronic release Tourist Accommodation, Small Area Data cat. no. 8635.n.55.001 (data cubes for each state/territory - issued quarterly).

24 Current publications and other products released by the ABS are listed in the *Catalogue of Publications and Products* (cat. no. 1101.0). The catalogue is available from any ABS office or the ABS web site <www.abs.gov.au>. The ABS also issues a daily Release Advice on the web site which details products to be released in the week ahead.

ABS DATA AVAILABLE ON REQUEST

25 As well as the statistics included in this publication, the ABS has other relevant data available on request. Inquiries should be made to the National Information and Referral Service on 1300 135 070.

APPENDIX 1 BREAK IN TIME SERIES

INTRODUCTION

1 The Survey of Tourist Accommodation (STA) frame is based on an electronic file supplied each quarter by AAA Tourism. Since December 2002, AAA Tourism have been more active in maintaining their listing of accommodation establishments on this electronic file.

2 This active maintenance has resulted in a large number of hotels, motels and guest houses and serviced apartments being identified for the first time in both the March quarter 2003 and the June quarter 2003. While these establishments were identified in these quarters, they actually commenced operations prior to these time periods. The number of establishments identified in the March quarter was 115 and in the June quarter 17 (132 in total).

3 These additional 132 establishments were added to the STA frame in the June quarter 2003. The addition of these 132 establishments added \$31.9 million (2.7%) to the total takings from accommodation for the June quarter, 285,689 room nights occupied (2.8%) and 5,918 guest rooms available (2.9%).

4 The most significant impact was in serviced apartments, which added \$18.6 million to total takings. This is 1.6% of the total accommodation takings for the June quarter 2003 and 7.3% of takings from serviced apartments. Serviced apartments also contributed 164,274 room nights occupied. This was 1.6% of the total room nights occupied for the June quarter 2003 and 7.8% of room nights occupied in serviced apartments.

5 The addition of the 132 tourism establishments resulted in a break in time series between the March and June quarters 2003. The impact of the break in time series is explained below.

THE IMPACT OF THE BREAK

6 The extent of the impact varies by geographic region. As can be seen in the table below the major additions occurred in New South Wales, Victoria and Queensland and within those states/territories for serviced apartments.

TABLE 1: NUMBER OF ESTABLISHMENTS ADDED AS A RESULT OF FRAME MAINTENANCE, State/territory, June quarter 2003

	<i>Hotels</i>	<i>Motels and guest houses</i>	<i>Serviced apartments</i>	<i>Total</i>
New South Wales	2	15	27	44
Victoria	3	8	17	28
Queensland	3	10	25	38
South Australia	1	1	3	5
Western Australia	1	4	6	11
Tasmania	1	1	1	3
Northern Territory	1	—	1	2
Australian Capital Territory	1	—	—	1
Australia	13	39	80	132

— nil or rounded to zero (including null cells)

7 The effect of the break in series on key data items for the separate activity types of hotels, motels and guest houses and serviced apartments is shown in the following tables. Some information is suppressed due to confidentiality.

8 Table 2 shows that 1,058 additional guest rooms were added to hotels in Australia in June quarter 2003. This was 1.4% of the 78,089 hotel rooms in Australia. The most significant addition was for serviced apartments with 3,262 guest rooms added, which was 8.3% of total serviced apartments rooms available.

APPENDIX 1 BREAK IN TIME SERIES *continued*

TABLE 2: CONTRIBUTION OF ADDITIONAL ESTABLISHMENTS TO ACTIVITY, Australia, June quarter 2003

	GUEST ROOMS (NO.)			ROOM NIGHTS OCCUPIED ('000)			TAKINGS FROM ACCOMMODATION (\$'000)		
	Total(a)	Additional	% of total	Total(a)	Additional	% of total	Total(a)	Additional	% of total
	Hotels	78 089	1 058	1.4	4 109.4	49.7	1.2	553 849	6 992
Motels and guest houses	85 148	1 598	1.9	3 954.8	71.8	1.8	351 004	6 224	1.8
Serviced apartments	39 182	3 262	8.3	2 119.6	164.3	7.8	254 647	18 634	7.3
Australia	202 419	5 918	2.9	10 183.8	285.7	2.8	1 159 500	31 850	2.7

(a) Includes contribution of additional establishments.

THE IMPACT OF THE BREAK

continued

9 Table 3 shows that New South Wales had \$9.4 million added to total takings for hotels, motels and guest houses and serviced apartments combined. This was 2.5% of the total takings for New South Wales. Overall, the additional 132 establishments added \$31.9 million (2.7%) to total takings from accommodation for Australia.

TABLE 3: CONTRIBUTION OF ADDITIONAL ESTABLISHMENTS TO SELECTED DATA ITEMS, Hotels, motels and guest houses and serviced apartments, State/territory, June quarter 2003

	GUEST ROOMS (NO.)			ROOM NIGHTS OCCUPIED ('000)			TAKINGS FROM ACCOMMODATION (\$'000)		
	Total(a)	Additional	% of total	Total(a)	Additional	% of total	Total(a)	Additional	% of total
	New South Wales	63 782	1 657	2.6	3 215.5	79.0	2.5	381 533	9 377
Victoria	34 902	1 436	4.1	1 695.2	70.9	4.2	206 134	8 411	4.1
Queensland	54 539	1 816	3.3	2 846.9	93.8	3.3	313 207	9 172	2.9
South Australia	11 764	270	2.3	560.9	11.7	2.1	56 754	1 581	2.8
Western Australia	19 989	490	2.5	987.8	19.0	1.9	104 182	2 058	2.0
Tasmania(b)	6 005	n.p.	n.p.	279.0	n.p.	n.p.	28 712	n.p.	n.p.
Northern Territory(b)	6 383	n.p.	n.p.	306.5	n.p.	n.p.	36 241	n.p.	n.p.
Australian Capital Territory(b)	5 055	n.p.	n.p.	292.0	n.p.	n.p.	32 736	n.p.	n.p.
Australia	202 419	5 918	2.9	10 183.8	285.7	2.8	1 159 500	31 850	2.7

(a) Includes contribution of additional establishments.

(b) Suppressed due to confidentiality

10 Table 5 in Appendix 2 shows how the 132 establishments which were added to June quarter 2003 were distributed at the Tourism Region level. Also supplied is the AAA Tourism count of rooms available.

11 Where releasable, the contribution of the 132 establishments to key data items at the Tourism Region level is shown in Tables 6 to 12 in Appendix 2. These tables present factors which can be used to take into account the break in series.

12 Some factors are suppressed due to confidentiality. In these cases the number of rooms available information shown in Table 5 in Appendix 2 will provide an indication of the significance of the change.

13 Almost all SLAs have had less than three establishments added, therefore most factors at this level are confidential. Releasable factors for six SLAs are contained in Table 13 in Appendix 2. Factors for these SLAs are only available for hotels, motels and guest houses and serviced apartments combined.

DERIVED ITEMS

14 A number of STA data items are calculated by the ABS after data has been collected from providers. These items are derived by dividing one collected data item into another. The data items are:

- Bed occupancy rate

APPENDIX 1 BREAK IN TIME SERIES *continued*

DERIVED ITEMS *continued*

- Room occupancy rate
- Average takings per room night occupied
- Average takings per room night available
- Average length of stay

15 Both the numerator and denominator used to calculate these items have been affected by the additional 132 establishments to a similar extent. Therefore the addition of the 132 establishments has a minimal effect on the calculation of these data items. Thus a break in series is not likely to have occurred for the derived data items.

PERCENTAGE CHANGES

16 The addition of the 132 establishments increased the level of the series from the June quarter 2003. When calculating percentage changes over time care needs to be taken to ensure the effect of the break in series is taken into account.

17 Tables 6 to 14 in Appendix 2 contain factors for use when calculating percentage changes. These factors were calculated by dividing June quarter 2003 figures including the 132 additional establishments, by the June quarter 2003 figures excluding the additional establishments. These factors adjust the level of the series prior to June quarter 2003 to take account of the missing 132 establishments.

18 Care should be taken when calculating percentage changes as not all 132 additional establishments may have been open in the quarter to which the factor is being applied. By using the factor to add the 132 establishments to the data, the estimate may be increased to a figure which is more than it should be. This will result in the percentage change between that quarter and June quarter 2003 being under-estimated.

19 Users should contact the Transport and Tourism Business Statistics Centre for further information on the contribution of the additional establishments to earlier quarters.

20 The method for calculating the percentage change is shown by the example below. Takings from accommodation data can be found in Tables 1 and 2 of this publication. Factors for original data can be found in Table 12 in Appendix 2. Seasonally adjusted and trend factors are contained in Table 14 in Appendix 2.

TABLE 4: TOTAL TAKINGS FROM ACCOMMODATION, Hotels, motels and guest houses and serviced apartments, Australia

	<i>Original</i>	<i>Seasonally Adjusted</i>	<i>Trend</i>
	\$'000	\$'000	\$'000
September quarter 2002	1 236 869	1 205 862	1 215 790
December quarter 2002	1 314 053	1 251 264	1 223 018
March quarter 2003	1 244 695	1 241 634	1 236 038
June quarter 2003	1 159 500	1 265 081	1 290 631
September quarter 2003	1 373 488	1 336 156	1 312 334
Factors	1.02824	1.02997	1.02997

Original data

21 To calculate the percentage change between September quarter 2002 and September quarter 2003 for takings from accommodation the following steps are undertaken:

22 Step 1:

Multiply the September quarter 2002 figure by the appropriate factor to obtain an adjusted September quarter 2002 figure

$$\$1,236,869 \times 1.02824 = \$1,271,798$$

APPENDIX 1 BREAK IN TIME SERIES *continued*

Original data continued

23 Step 2:

Calculate the percentage change in the usual manner except in this case use the adjusted September quarter 2002 figure

$$(\$1,373,488 / \$1,271,798 - 1) \times 100 = 8.0\%$$

24 This same methodology applies for all calculations of percentage changes that cross the break in series (ie June quarter 2003). Factors are not needed when calculating percentage changes before the break in series.

Seasonally Adjusted and Trend Estimates

25 Seasonally adjusted and trend estimates are subject to the same break in series. Care should be taken when calculating percentage changes to ensure the effect of the break in series is taken into account. The same methodology as described above should be applied to these data to calculate percentage changes, although a different factor should be used. These factors are contained in Table 14 in Appendix 2.

26 Note that seasonally adjusted and trend estimates are only produced for the data items of takings from accommodation and room occupancy rate. As the break in series does not impact on derived data items, the factors in Table 14 in Appendix 2 need only be applied to takings from accommodation.

Monthly data

27 The additional 132 establishments have been added into each month of the June quarter 2003 (ie April, May, June). Therefore the break in series has occurred between the months of March and April 2003. When calculating percentage changes, the appropriate quarterly factor should be used to adjust monthly data in respect of the break in series.

28 Users should contact the Transport and Tourism Business Statistics Centre if they have any queries on the break in series.

TABLES

29 Appendix 2 which follows contains tables for use when calculating percentage changes:

- Table 5 shows the geographic distribution of the additional 132 establishments
- Tables 6 - 14 contains factors for use when calculating percentage changes.

APPENDIX 2 FACTOR TABLES

TABLE 5: ESTABLISHMENTS ADDED IN JUNE QUARTER 2003

	HOTELS		MOTELS AND GUEST HOUSES		SERVICED APARTMENTS		TOTAL	
	Establish- ment count	AAAT room count	Establish- ment count	AAAT room count	Establish- ment count	AAAT room count	Establish- ment count	AAAT room count
<i>Tourism Region</i>								
<i>New South Wales</i>								
South Coast	—	—	—	—	1	33	1	33
Sydney	1	20	5	213	10	393	16	626
Snowy Mountains	—	—	1	22	—	—	1	22
The Murray	—	—	1	16	—	—	1	16
Riverina	—	—	1	46	—	—	1	46
Explorer Country	—	—	2	39	—	—	2	39
Hunter	1	175	1	97	1	20	3	292
North Coast NSW	—	—	—	—	8	222	8	222
Northern Rivers Tropical NSW	—	—	1	22	6	192	7	214
New England North West	—	—	3	216	—	—	3	216
Central Coast	—	—	—	—	1	20	1	20
Total	2	195	15	671	27	880	44	1 746
<i>Victoria</i>								
Melbourne	3	373	4	400	11	386	18	1 159
Western	—	—	—	—	1	17	1	17
Bendigo Loddon	—	—	1	31	—	—	1	31
Peninsula	—	—	2	40	—	—	2	40
Goulburn	—	—	1	26	—	—	1	26
High Country	—	—	—	—	3	81	3	81
Lakes	—	—	—	—	1	18	1	18
Geelong	—	—	—	—	1	16	1	16
Total	3	373	8	497	17	518	28	1 388
<i>Queensland</i>								
Gold Coast	—	—	—	—	9	723	9	723
Brisbane	—	—	1	25	1	41	2	66
Sunshine Coast	—	—	—	—	1	124	1	124
Hervey Bay/Maryborough	—	—	1	23	1	20	2	43
Darling Downs	—	—	1	15	—	—	1	15
Bundaberg	1	26	—	—	—	—	1	26
Fitzroy	—	—	1	25	—	—	1	25
Mackay	—	—	2	68	—	—	2	68
Northern	1	29	1	28	1	140	3	197
Tropical North Queensland	1	25	2	57	12	579	15	661
Outback	—	—	1	19	—	—	1	19
Total	3	80	10	260	25	1 627	38	1 967
<i>South Australia</i>								
Fleurieu Peninsula	—	—	1	43	1	15	2	58
Adelaide	1	171	—	—	1	17	2	188
Eyre Peninsula	—	—	—	—	1	25	1	25
Total	1	171	1	43	3	57	5	271
<i>Western Australia</i>								
South East	—	—	—	—	1	15	1	15
Pilbara	—	—	2	116	—	—	2	116
Perth	—	—	1	18	3	164	4	182
South West	1	88	1	20	1	48	3	156
Great Southern	—	—	—	—	1	25	1	25
Total	1	88	4	154	6	252	11	494
<i>Tasmania</i>								
Greater Hobart	—	—	—	—	1	25	1	25
North West	1	60	—	—	—	—	1	60
West Coast	—	—	1	28	—	—	1	28
Total	1	60	1	28	1	25	3	113

— nil or rounded to zero (including null cells)

APPENDIX 2 FACTOR TABLES *continued*

TABLE 5: ESTABLISHMENTS ADDED IN JUNE QUARTER 2003 *continued*

	HOTELS		MOTELS AND GUEST HOUSES		SERVICED APARTMENTS		TOTAL	
	<i>Establish- ment count</i>	<i>AAAT room count</i>	<i>Establish- ment count</i>	<i>AAAT room count</i>	<i>Establish- ment count</i>	<i>AAAT room count</i>	<i>Establish- ment count</i>	<i>AAAT room count</i>
<i>Tourism Region</i>								
Northern Territory								
Katherine	1	38	—	—	—	—	1	38
Alice Springs	—	—	—	—	1	34	1	34
Total	1	38	—	—	1	34	2	72
Australian Capital Territory								
Total	1	58	—	—	—	—	1	58
AUSTRALIA	13	1 063	39	1 653	80	3 393	132	6 109

— nil or rounded to zero (including null cells)

APPENDIX 2 FACTOR TABLES *continued*

TABLE 6: GUEST ROOMS FACTORS (a) (b)

<i>Tourism Region</i>	<i>Hotels</i>	<i>Motels and guest houses</i>	<i>Serviced Apartments</i>	<i>Total</i>
New South Wales				
South Coast	1.00000	1.00000	n.p.	n.p.
Sydney	n.p.	1.03042	1.09062	1.02125
Snowy Mountains	1.00000	n.p.	1.00000	n.p.
The Murray	1.00000	n.p.	1.00000	n.p.
Riverina	1.00000	n.p.	1.00000	n.p.
Explorer Country	1.00000	n.p.	1.00000	n.p.
Hunter	n.p.	n.p.	n.p.	n.p.
North Coast NSW	1.00000	1.00000	1.36892	1.05862
Northern Rivers Tropical NSW	1.00000	n.p.	1.43669	1.09091
New England North West	1.00000	1.05444	1.00000	1.04933
Central Coast	1.00000	1.00000	n.p.	n.p.
Total	1.00862	1.01799	1.12137	1.02667
Victoria				
Melbourne	1.03473	1.08597	1.09798	1.06117
Western	1.00000	1.00000	n.p.	n.p.
Bendigo Loddon	1.00000	n.p.	1.00000	n.p.
Peninsula	1.00000	n.p.	1.00000	n.p.
Goulburn	1.00000	n.p.	1.00000	n.p.
High Country	1.00000	1.00000	n.p.	n.p.
Lakes	1.00000	1.00000	n.p.	n.p.
Geelong	1.00000	1.00000	n.p.	n.p.
Total	1.02887	1.03177	1.11276	1.04291
Queensland				
Gold Coast	1.00000	1.00000	1.14435	1.05225
Brisbane	1.00000	n.p.	n.p.	n.p.
Sunshine Coast	1.00000	1.00000	n.p.	n.p.
Hervey Bay/Maryborough	1.00000	n.p.	n.p.	n.p.
Darling Downs	1.00000	n.p.	1.00000	n.p.
Bundaberg	n.p.	1.00000	1.00000	n.p.
Fitzroy	1.00000	n.p.	1.00000	n.p.
Mackay	1.00000	n.p.	1.00000	n.p.
Northern	n.p.	n.p.	n.p.	n.p.
Tropical North Queensland	n.p.	n.p.	1.25170	1.06057
Outback	1.00000	n.p.	1.00000	n.p.
Total	1.00383	1.01557	1.10410	1.03443
South Australia				
Fleurieu Peninsula	1.00000	n.p.	n.p.	n.p.
Adelaide	n.p.	1.00000	n.p.	n.p.
Eyre Peninsula	1.00000	1.00000	n.p.	n.p.
Total	n.p.	n.p.	1.03576	1.02354
Western Australia				
South East	1.00000	1.00000	n.p.	n.p.
Pilbara	1.00000	n.p.	1.00000	n.p.
Perth	1.00000	n.p.	1.07292	1.01810
South West	n.p.	n.p.	n.p.	n.p.
Great Southern	1.00000	1.00000	n.p.	n.p.
Total	n.p.	1.03044	1.05458	1.02513
Tasmania				
Greater Hobart	1.00000	1.00000	n.p.	n.p.
North West	n.p.	1.00000	1.00000	n.p.
West Coast	1.00000	n.p.	1.00000	n.p.
Total	n.p.	n.p.	n.p.	n.p.

(a) A factor of 1.00000 denotes no additional establishments have been added to the Tourism Region

(b) n.p. denotes not available for publication due to confidentiality but included in totals where applicable

APPENDIX 2 FACTOR TABLES *continued*

TABLE 6: GUEST ROOMS FACTORS (a)(b) *continued*

<i>Tourism Region</i>	<i>Hotels</i>	<i>Motels and guest houses</i>	<i>Serviced Apartments</i>	<i>Total</i>
Northern Territory				
Katherine	n.p.	1.00000	1.00000	n.p.
Alice Springs	1.00000	1.00000	n.p.	n.p.
Total	n.p.	1.00000	n.p.	n.p.
Australian Capital Territory	n.p.	1.00000	1.00000	n.p.
Australia	1.01373	1.01913	1.09081	1.03012

(a) A factor of 1.00000 denotes no additional establishments have been added to the Tourism Region

(b) n.p. denotes not available for publication due to confidentiality but included in totals where applicable

APPENDIX 2 FACTOR TABLES *continued*

TABLE 7: BED SPACES FACTORS (a)(b)

<i>Tourism Region</i>	<i>Hotels</i>	<i>Motels and guest houses</i>	<i>Serviced Apartments</i>	<i>Total</i>
New South Wales				
South Coast	1.00000	1.00000	n.p.	n.p.
Sydney	n.p.	1.03076	1.08898	1.02326
Snowy Mountains	1.00000	n.p.	1.00000	n.p.
The Murray	1.00000	n.p.	1.00000	n.p.
Riverina	1.00000	n.p.	1.00000	n.p.
Explorer Country	1.00000	n.p.	1.00000	n.p.
Hunter	n.p.	n.p.	n.p.	n.p.
North Coast NSW	1.00000	1.00000	1.47689	1.07298
Northern Rivers Tropical NSW	1.00000	n.p.	1.48958	1.11195
New England North West	1.00000	1.03348	1.00000	1.03045
Central Coast	1.00000	1.00000	n.p.	n.p.
Total	1.00700	1.01567	1.13098	1.02807
Victoria				
Melbourne	1.03438	1.11080	1.12339	1.07783
Western	1.00000	1.00000	n.p.	n.p.
Bendigo Loddon	1.00000	n.p.	1.00000	n.p.
Peninsula	1.00000	n.p.	1.00000	n.p.
Goulburn	1.00000	n.p.	1.00000	n.p.
High Country	1.00000	1.00000	n.p.	n.p.
Lakes	1.00000	1.00000	n.p.	n.p.
Geelong	1.00000	1.00000	n.p.	n.p.
Total	1.02713	1.03601	1.13663	1.05015
Queensland				
Gold Coast	1.00000	1.00000	1.12438	1.04502
Brisbane	1.00000	n.p.	n.p.	n.p.
Sunshine Coast	1.00000	1.00000	n.p.	n.p.
Hervey Bay/Maryborough	1.00000	n.p.	n.p.	n.p.
Darling Downs	1.00000	n.p.	1.00000	n.p.
Bundaberg	n.p.	1.00000	1.00000	n.p.
Fitzroy	1.00000	n.p.	1.00000	n.p.
Mackay	1.00000	n.p.	1.00000	n.p.
Northern	n.p.	n.p.	n.p.	n.p.
Tropical North Queensland	n.p.	n.p.	1.21472	1.05955
Outback	1.00000	n.p.	1.00000	n.p.
Total	1.00365	1.01440	1.09285	1.03273
South Australia				
Fleurieu Peninsula	1.00000	n.p.	n.p.	n.p.
Adelaide	n.p.	1.00000	n.p.	n.p.
Eyre Peninsula	1.00000	1.00000	n.p.	n.p.
Total	n.p.	n.p.	1.03415	1.02298
Western Australia				
South East	1.00000	1.00000	n.p.	n.p.
Pilbara	1.00000	n.p.	1.00000	n.p.
Perth	1.00000	n.p.	1.06176	1.01897
South West	n.p.	n.p.	n.p.	n.p.
Great Southern	1.00000	1.00000	n.p.	n.p.
Total	n.p.	1.02133	1.05477	1.02759
Tasmania				
Greater Hobart	1.00000	1.00000	n.p.	n.p.
North West	n.p.	1.00000	1.00000	n.p.
West Coast	1.00000	n.p.	1.00000	n.p.
Total	n.p.	n.p.	n.p.	n.p.

(a) A factor of 1.00000 denotes no additional establishments have been added to the Tourism Region

(b) n.p. denotes not available for publication due to confidentiality but included in totals where applicable

APPENDIX 2 FACTOR TABLES *continued*

TABLE 7: BED SPACES FACTORS (a)(b) *continued*

<i>Tourism Region</i>	<i>Hotels</i>	<i>Motels and guest houses</i>	<i>Serviced Apartments</i>	<i>Total</i>
Northern Territory				
Katherine	n.p.	1.00000	1.00000	n.p.
Alice Springs	1.00000	1.00000	n.p.	n.p.
Total	n.p.	1.00000	n.p.	n.p.
Australian Capital Territory	n.p.	1.00000	1.00000	n.p.
Australia	1.01320	1.01813	1.09012	1.03139

(a) A factor of 1.00000 denotes no additional establishments have been added to the Tourism Region

(b) n.p. denotes not available for publication due to confidentiality but included in totals where applicable

APPENDIX 2 FACTOR TABLES *continued*

TABLE 8: PERSONS EMPLOYED FACTORS (a) (b)

<i>Tourism Region</i>	<i>Hotels</i>	<i>Motels and guest houses</i>	<i>Serviced Apartments</i>	<i>Total</i>
New South Wales				
South Coast	1.00000	1.00000	n.p.	n.p.
Sydney	n.p.	1.01306	1.10443	1.00800
Snowy Mountains	1.00000	n.p.	1.00000	n.p.
The Murray	1.00000	n.p.	1.00000	n.p.
Riverina	1.00000	n.p.	1.00000	n.p.
Explorer Country	1.00000	n.p.	1.00000	n.p.
Hunter	n.p.	n.p.	n.p.	n.p.
North Coast NSW	1.00000	1.00000	1.10973	1.02750
Northern Rivers Tropical NSW	1.00000	n.p.	1.25517	1.06042
New England North West	1.00000	1.02125	1.00000	1.01914
Central Coast	1.00000	1.00000	n.p.	n.p.
Total	1.00111	1.00902	1.08806	1.01062
Victoria				
Melbourne	1.01454	1.02957	1.06250	1.02077
Western	1.00000	1.00000	n.p.	n.p.
Bendigo Loddon	1.00000	n.p.	1.00000	n.p.
Peninsula	1.00000	n.p.	1.00000	n.p.
Goulburn	1.00000	n.p.	1.00000	n.p.
High Country	1.00000	1.00000	n.p.	n.p.
Lakes	1.00000	1.00000	n.p.	n.p.
Geelong	1.00000	1.00000	n.p.	n.p.
Total	1.01241	1.01386	1.07766	1.01804
Queensland				
Gold Coast	1.00000	1.00000	1.03509	1.00503
Brisbane	1.00000	n.p.	n.p.	n.p.
Sunshine Coast	1.00000	1.00000	n.p.	n.p.
Hervey Bay/Maryborough	1.00000	n.p.	n.p.	n.p.
Darling Downs	1.00000	n.p.	1.00000	n.p.
Bundaberg	n.p.	1.00000	1.00000	n.p.
Fitzroy	1.00000	n.p.	1.00000	n.p.
Mackay	1.00000	n.p.	1.00000	n.p.
Northern	n.p.	n.p.	n.p.	n.p.
Tropical North Queensland	n.p.	n.p.	1.18929	1.03499
Outback	1.00000	n.p.	1.00000	n.p.
Total	1.00101	1.01200	1.05270	1.01069
South Australia				
Fleurieu Peninsula	1.00000	n.p.	n.p.	n.p.
Adelaide	n.p.	1.00000	n.p.	n.p.
Eyre Peninsula	1.00000	1.00000	n.p.	n.p.
Total	n.p.	n.p.	1.06993	1.01746
Western Australia				
South East	1.00000	1.00000	n.p.	n.p.
Pilbara	1.00000	n.p.	1.00000	n.p.
Perth	1.00000	n.p.	1.03017	1.00486
South West	n.p.	n.p.	n.p.	n.p.
Great Southern	1.00000	1.00000	n.p.	n.p.
Total	n.p.	1.01422	1.03092	1.00999
Tasmania				
Greater Hobart	1.00000	1.00000	n.p.	n.p.
North West	n.p.	1.00000	1.00000	n.p.
West Coast	1.00000	n.p.	1.00000	n.p.
Total	n.p.	n.p.	n.p.	n.p.

(a) A factor of 1.00000 denotes no additional establishments have been added to the Tourism Region

(b) n.p. denotes not available for publication due to confidentiality but included in totals where applicable

APPENDIX 2 FACTOR TABLES *continued*

TABLE 8: PERSONS EMPLOYED FACTORS (a)(b) *continued*

<i>Tourism Region</i>	<i>Hotels</i>	<i>Motels and guest houses</i>	<i>Serviced Apartments</i>	<i>Total</i>
Northern Territory				
Katherine	n.p.	1.00000	1.00000	n.p.
Alice Springs	1.00000	1.00000	n.p.	n.p.
Total	n.p.	1.00000	n.p.	n.p.
Australian Capital Territory	n.p.	1.00000	1.00000	n.p.
Australia	1.00450	1.01126	1.05647	1.01207

(a) A factor of 1.00000 denotes no additional establishments have been added to the Tourism Region

(b) n.p. denotes not available for publication due to confidentiality but included in totals where applicable

APPENDIX 2 FACTOR TABLES *continued*

TABLE 9: ROOM NIGHTS OCCUPIED FACTORS (a)(b)

<i>Tourism Region</i>	<i>Hotels</i>	<i>Motels and guest houses</i>	<i>Serviced Apartments</i>	<i>Total</i>
New South Wales				
South Coast	1.00000	1.00000	n.p.	n.p.
Sydney	n.p.	1.02495	1.08158	1.01869
Snowy Mountains	1.00000	n.p.	1.00000	n.p.
The Murray	1.00000	n.p.	1.00000	n.p.
Riverina	1.00000	n.p.	1.00000	n.p.
Explorer Country	1.00000	n.p.	1.00000	n.p.
Hunter	n.p.	n.p.	n.p.	n.p.
North Coast NSW	1.00000	1.00000	1.31566	1.05971
Northern Rivers Tropical NSW	1.00000	n.p.	1.43947	1.08813
New England North West	1.00000	1.04389	1.00000	1.04040
Central Coast	1.00000	1.00000	n.p.	n.p.
Total	1.00611	1.01782	1.11193	1.02519
Victoria				
Melbourne	1.03228	1.10094	1.09185	1.06067
Western	1.00000	1.00000	n.p.	n.p.
Bendigo Loddon	1.00000	n.p.	1.00000	n.p.
Peninsula	1.00000	n.p.	1.00000	n.p.
Goulburn	1.00000	n.p.	1.00000	n.p.
High Country	1.00000	1.00000	n.p.	n.p.
Lakes	1.00000	1.00000	n.p.	n.p.
Geelong	1.00000	1.00000	n.p.	n.p.
Total	1.02859	1.03647	1.09458	1.04364
Queensland				
Gold Coast	1.00000	1.00000	1.13491	1.05282
Brisbane	1.00000	n.p.	n.p.	n.p.
Sunshine Coast	1.00000	1.00000	n.p.	n.p.
Hervey Bay/Maryborough	1.00000	n.p.	n.p.	n.p.
Darling Downs	1.00000	n.p.	1.00000	n.p.
Bundaberg	n.p.	1.00000	1.00000	n.p.
Fitzroy	1.00000	n.p.	1.00000	n.p.
Mackay	1.00000	n.p.	1.00000	n.p.
Northern	n.p.	n.p.	n.p.	n.p.
Tropical North Queensland	n.p.	n.p.	1.27062	1.06218
Outback	1.00000	n.p.	1.00000	n.p.
Total	1.00435	1.01544	1.10036	1.03406
South Australia				
Fleurieu Peninsula	1.00000	n.p.	n.p.	n.p.
Adelaide	n.p.	1.00000	n.p.	n.p.
Eyre Peninsula	1.00000	1.00000	n.p.	n.p.
Total	n.p.	n.p.	1.03293	1.02136
Western Australia				
South East	1.00000	1.00000	n.p.	n.p.
Pilbara	1.00000	n.p.	1.00000	n.p.
Perth	1.00000	n.p.	1.07897	1.01741
South West	n.p.	n.p.	n.p.	n.p.
Great Southern	1.00000	1.00000	n.p.	n.p.
Total	n.p.	1.01823	1.05013	1.01960
Tasmania				
Greater Hobart	1.00000	1.00000	n.p.	n.p.
North West	n.p.	1.00000	1.00000	n.p.
West Coast	1.00000	n.p.	1.00000	n.p.
Total	n.p.	n.p.	n.p.	n.p.

(a) A factor of 1.00000 denotes no additional establishments have been added to the Tourism Region

(b) n.p. denotes not available for publication due to confidentiality but included in totals where applicable

APPENDIX 2 FACTOR TABLES *continued*

TABLE 9: ROOM NIGHTS OCCUPIED FACTORS (a)(b) *continued*

<i>Tourism Region</i>	<i>Hotels</i>	<i>Motels and guest houses</i>	<i>Serviced Apartments</i>	<i>Total</i>
Northern Territory				
Katherine	n.p.	1.00000	1.00000	n.p.
Alice Springs	1.00000	1.00000	n.p.	n.p.
Total	n.p.	1.00000	n.p.	n.p.
Australian Capital Territory	n.p.	1.00000	1.00000	n.p.
Australia	1.01223	1.01848	1.08401	1.02886

(a) A factor of 1.00000 denotes no additional establishments have been added to the Tourism Region

(b) n.p. denotes not available for publication due to confidentiality but included in totals where applicable

APPENDIX 2 FACTOR TABLES *continued*

TABLE 10: GUEST NIGHTS FACTORS (a) (b)

<i>Tourism Region</i>	<i>Hotels</i>	<i>Motels and guest houses</i>	<i>Serviced Apartments</i>	<i>Total</i>
New South Wales				
South Coast	1.00000	1.00000	n.p.	n.p.
Sydney	n.p.	1.02517	1.07455	1.01957
Snowy Mountains	1.00000	n.p.	1.00000	n.p.
The Murray	1.00000	n.p.	1.00000	n.p.
Riverina	1.00000	n.p.	1.00000	n.p.
Explorer Country	1.00000	n.p.	1.00000	n.p.
Hunter	n.p.	n.p.	n.p.	n.p.
North Coast NSW	1.00000	1.00000	1.39858	1.08647
Northern Rivers Tropical NSW	1.00000	n.p.	1.50294	1.11486
New England North West	1.00000	1.04260	1.00000	1.03924
Central Coast	1.00000	1.00000	n.p.	n.p.
Total	1.07770	1.01661	1.12494	1.02943
Victoria				
Melbourne	1.03135	1.10794	1.09291	1.06420
Western	1.00000	1.00000	n.p.	n.p.
Bendigo Loddon	1.00000	n.p.	1.00000	n.p.
Peninsula	1.00000	n.p.	1.00000	n.p.
Goulburn	1.00000	n.p.	1.00000	n.p.
High Country	1.00000	1.00000	n.p.	n.p.
Lakes	1.00000	1.00000	n.p.	n.p.
Geelong	1.00000	1.00000	n.p.	n.p.
Total	1.02754	1.03755	1.09914	1.04637
Queensland				
Gold Coast	1.00000	1.00000	1.14787	1.06839
Brisbane	1.00000	n.p.	n.p.	n.p.
Sunshine Coast	1.00000	1.00000	n.p.	n.p.
Hervey Bay/Maryborough	1.00000	n.p.	n.p.	n.p.
Darling Downs	1.00000	n.p.	1.00000	n.p.
Bundaberg	n.p.	1.00000	1.00000	n.p.
Fitzroy	1.00000	n.p.	1.00000	n.p.
Mackay	1.00000	n.p.	1.00000	n.p.
Northern	n.p.	n.p.	n.p.	n.p.
Tropical North Queensland	n.p.	n.p.	1.25676	1.06971
Outback	1.00000	n.p.	1.00000	n.p.
Total	1.00493	1.01250	1.10393	1.04016
South Australia				
Fleurieu Peninsula	1.00000	n.p.	n.p.	n.p.
Adelaide	n.p.	1.00000	n.p.	n.p.
Eyre Peninsula	1.00000	1.00000	n.p.	n.p.
Total	n.p.	n.p.	1.03606	1.02477
Western Australia				
South East	1.00000	1.00000	n.p.	n.p.
Pilbara	1.00000	n.p.	1.00000	n.p.
Perth	1.00000	n.p.	1.08787	1.02403
South West	n.p.	n.p.	n.p.	n.p.
Great Southern	1.00000	1.00000	n.p.	n.p.
Total	n.p.	1.01724	1.05648	1.02819
Tasmania				
Greater Hobart	1.00000	1.00000	n.p.	n.p.
North West	n.p.	1.00000	1.00000	n.p.
West Coast	1.00000	n.p.	1.00000	n.p.
Total	n.p.	n.p.	n.p.	n.p.

(a) A factor of 1.00000 denotes no additional establishments have been added to the Tourism Region

(b) n.p. denotes not available for publication due to confidentiality but included in totals where applicable

APPENDIX 2 FACTOR TABLES *continued*

TABLE 10: GUEST NIGHTS FACTORS(a)(b) *continued*

<i>Tourism Region</i>	<i>Hotels</i>	<i>Motels and guest houses</i>	<i>Serviced Apartments</i>	<i>Total</i>
Northern Territory				
Katherine	n.p.	1.00000	1.00000	n.p.
Alice Springs	1.00000	1.00000	n.p.	n.p.
Total	n.p.	1.00000	n.p.	n.p.
Australian Capital Territory	n.p.	1.00000	1.00000	n.p.
Australia	1.01376	1.01748	1.09028	1.03362

(a) A factor of 1.00000 denotes no additional establishments have been added to the Tourism Region

(b) n.p. denotes not available for publication due to confidentiality but included in totals where applicable

APPENDIX 2 FACTOR TABLES *continued*

TABLE 11: GUEST ARRIVALS FACTORS (a)(b)

<i>Tourism Region</i>	<i>Hotel</i>	<i>Motel</i>	<i>Serviced Apartments</i>	<i>Total</i>
New South Wales				
South Coast	1.00000	1.00000	n.p.	n.p.
Sydney	n.p.	1.03469	1.11744	1.02394
Snowy Mountains	1.00000	n.p.	1.00000	n.p.
The Murray	1.00000	n.p.	1.00000	n.p.
Riverina	1.00000	n.p.	1.00000	n.p.
Explorer Country	1.00000	n.p.	1.00000	n.p.
Hunter	n.p.	n.p.	n.p.	n.p.
North Coast NSW	1.00000	1.00000	1.37733	1.05311
Northern Rivers Tropical NSW	1.00000	n.p.	1.47041	1.08057
New England North West	1.00000	1.04314	1.00000	1.04075
Central Coast	1.00000	1.00000	n.p.	n.p.
Total	1.00923	1.01807	1.15372	1.02781
Victoria				
Melbourne	1.03072	1.09392	1.10614	1.06160
Western	1.00000	1.00000	n.p.	n.p.
Bendigo Loddon	1.00000	n.p.	1.00000	n.p.
Peninsula	1.00000	n.p.	1.00000	n.p.
Goulburn	1.00000	n.p.	1.00000	n.p.
High Country	1.00000	1.00000	n.p.	n.p.
Lakes	1.00000	1.00000	n.p.	n.p.
Geelong	1.00000	1.00000	n.p.	n.p.
Total	1.02623	1.03017	1.10770	1.03906
Queensland				
Gold Coast	1.00000	1.00000	1.12181	1.03864
Brisbane	1.00000	n.p.	n.p.	n.p.
Sunshine Coast	1.00000	1.00000	n.p.	n.p.
Hervey Bay/Maryborough	1.00000	n.p.	n.p.	n.p.
Darling Downs	1.00000	n.p.	1.00000	n.p.
Bundaberg	n.p.	1.00000	1.00000	n.p.
Fitzroy	1.00000	n.p.	1.00000	n.p.
Mackay	1.00000	n.p.	1.00000	n.p.
Northern	n.p.	n.p.	n.p.	n.p.
Tropical North Queensland	n.p.	n.p.	1.26131	1.04869
Outback	1.00000	n.p.	1.00000	n.p.
Total	1.00583	1.01336	1.08453	1.02624
South Australia				
Fleurieu Peninsula	1.00000	n.p.	n.p.	n.p.
Adelaide	n.p.	1.00000	n.p.	n.p.
Eyre Peninsula	1.00000	1.00000	n.p.	n.p.
Total	n.p.	n.p.	1.03963	1.02248
Western Australia				
South East	1.00000	1.00000	n.p.	n.p.
Pilbara	1.00000	n.p.	1.00000	n.p.
Perth	1.00000	n.p.	1.08096	1.01750
South West	n.p.	n.p.	n.p.	n.p.
Great Southern	1.00000	1.00000	n.p.	n.p.
Total	n.p.	1.01913	1.06341	1.02472
Tasmania				
Greater Hobart	1.00000	1.00000	n.p.	n.p.
North West	n.p.	1.00000	1.00000	n.p.
West Coast	1.00000	n.p.	1.00000	n.p.
Total	n.p.	n.p.	n.p.	n.p.

- (a) A factor of 1.00000 denotes no additional establishments have been added to the Tourism Region
- (b) n.p. denotes not available for publication due to confidentiality but included in totals where applicable

APPENDIX 2 FACTOR TABLES *continued*

TABLE 11: GUEST ARRIVALS FACTORS (a)(b) *continued*

<i>Tourism Region</i>	<i>Hotel</i>	<i>Motel</i>	<i>Serviced Apartments</i>	<i>Total</i>
Northern Territory				
Katherine	n.p.	1.00000	1.00000	n.p.
Alice Springs	1.00000	1.00000	n.p.	n.p.
Total	n.p.	1.00000	n.p.	n.p.
Australian Capital Territory	n.p.	1.00000	1.00000	n.p.
Australia	1.01533	1.01743	1.09065	1.02782

- (a) A factor of 1.00000 denotes no additional establishments have been added to the Tourism Region
- (b) n.p. denotes not available for publication due to confidentiality but included in totals where applicable

APPENDIX 2 FACTOR TABLES *continued*

TABLE 12: TAKINGS FROM ACCOMMODATION FACTORS (a)(b)

<i>Tourism Region</i>	<i>Hotels</i>	<i>Motels and guest houses</i>	<i>Serviced apartments</i>	<i>Total</i>
New South Wales				
South Coast	1.00000	1.00000	n.p.	n.p.
Sydney	n.p.	1.01788	1.08046	1.01691
Snowy Mountains	1.00000	n.p.	1.00000	n.p.
The Murray	1.00000	n.p.	1.00000	n.p.
Riverina	1.00000	n.p.	1.00000	n.p.
Explorer Country	1.00000	n.p.	1.00000	n.p.
Hunter	n.p.	n.p.	n.p.	n.p.
North Coast NSW	1.00000	1.00000	1.33416	1.07590
Northern Rivers Tropical NSW	1.00000	n.p.	1.44552	1.10924
New England North West	1.00000	1.03289	1.00000	1.03073
Central Coast	1.00000	1.00000	n.p.	n.p.
Total	1.00737	1.01577	1.10463	1.02520
Victoria				
Melbourne	1.03071	1.09527	1.08189	1.05274
Western	1.00000	1.00000	n.p.	n.p.
Bendigo Loddon	1.00000	n.p.	1.00000	n.p.
Peninsula	1.00000	n.p.	1.00000	n.p.
Goulburn	1.00000	n.p.	1.00000	n.p.
High Country	1.00000	1.00000	n.p.	n.p.
Lakes	1.00000	1.00000	n.p.	n.p.
Geelong	1.00000	1.00000	n.p.	n.p.
Total	1.02811	1.03707	1.08637	1.04254
Queensland				
Gold Coast	1.00000	1.00000	1.14485	1.04691
Brisbane	1.00000	n.p.	n.p.	n.p.
Sunshine Coast	1.00000	1.00000	n.p.	n.p.
Hervey Bay/Maryborough	1.00000	n.p.	n.p.	n.p.
Darling Downs	1.00000	n.p.	1.00000	n.p.
Bundaberg	n.p.	1.00000	1.00000	n.p.
Fitzroy	1.00000	n.p.	1.00000	n.p.
Mackay	1.00000	n.p.	1.00000	n.p.
Northern	n.p.	n.p.	n.p.	n.p.
Tropical North Queensland	n.p.	n.p.	1.23330	1.05282
Outback	1.00000	n.p.	1.00000	n.p.
Total	1.00353	1.01681	1.09383	1.03016
South Australia				
Fleurieu Peninsula	1.00000	n.p.	n.p.	n.p.
Adelaide	n.p.	1.00000	n.p.	n.p.
Eyre Peninsula	1.00000	1.00000	n.p.	n.p.
Total	n.p.	n.p.	1.03089	1.02870
Western Australia				
South East	1.00000	1.00000	n.p.	n.p.
Pilbara	1.00000	n.p.	1.00000	n.p.
Perth	1.00000	n.p.	1.06410	1.01432
South West	n.p.	n.p.	n.p.	n.p.
Great Southern	1.00000	1.00000	n.p.	n.p.
Total	n.p.	1.01551	1.04539	1.02015
Tasmania				
Greater Hobart	1.00000	1.00000	n.p.	n.p.
North West	n.p.	1.00000	1.00000	n.p.
West Coast	1.00000	n.p.	1.00000	n.p.
Total	n.p.	n.p.	n.p.	n.p.

(a) A factor of 1.00000 denotes no additional establishments have been added to the Tourism Region

(b) n.p. denotes not available for publication due to confidentiality but included in totals where applicable

APPENDIX 2 FACTOR TABLES *continued*

TABLE 12: TAKINGS FROM ACCOMMODATION FACTORS (a)(b)
continued

<i>Tourism Region</i>	<i>Hotels</i>	<i>Motels and guest houses</i>	<i>Serviced apartments</i>	<i>Total</i>
Northern Territory				
Katherine	n.p.	1.00000	1.00000	n.p.
Alice Springs	1.00000	1.00000	n.p.	n.p.
Total	n.p.	1.00000	n.p.	n.p.
Australian Capital Territory	n.p.	1.00000	1.00000	n.p.
Australia	1.01279	1.01805	1.07895	1.02824

(a) A factor of 1.00000 denotes no additional establishments have been added to the Tourism Region

(b) n.p. denotes not available for publication due to confidentiality but included in totals where applicable

TABLE 13: STATISTICAL LOCAL AREA FACTORS, Hotels, motels and
guest houses and serviced apartments

<i>SLA</i>	<i>Guest rooms</i>	<i>Bed spaces</i>	<i>Persons employed</i>	<i>Room nights occu- pied</i>	<i>Guest nights</i>	<i>Guest arrivals</i>	<i>Takings from accom- modation</i>
South Sydney (C)	1.03353	1.02914	1.00781	1.02880	1.02744	1.03328	1.02353
Sydney (C) - Remainder	1.02420	1.02993	1.01108	1.02083	1.02245	1.02482	1.02966
Hastings (A) - Pt A	1.17945	1.23366	1.05263	1.16606	1.28936	1.18777	1.16970
Melbourne (C) - Inner	1.06213	1.08036	1.05110	1.05601	1.06027	1.05311	1.05408
Douglas (S)	1.11308	1.10991	1.03576	1.11404	1.12622	1.13138	1.07664
Perth (C) - Remainder	1.04875	1.05151	1.01232	1.05114	1.07470	1.05607	1.04042

TABLE 14: FACTORS FOR SEASONALLY ADJUSTED AND TREND
ESTIMATES

	<i>Factors for takings from accommodation</i>
New South Wales	1.02739
Victoria	1.04388
Queensland	1.02968
South Australia	1.03241
Western Australia	1.02464
Tasmania	1.02043
Northern Territory	1.00636
Australian Capital Territory	1.02172
Australia	1.02997

GLOSSARY

Average length of stay	<p>Average length of stay is expressed in numbers of days and calculated:</p> <ul style="list-style-type: none"> ■ for hotels, motels and guest houses and serviced apartments, by dividing guest nights by guest arrivals ■ for holiday flats, units and houses, by dividing unit nights occupied by unit lettings.
Average takings per available room night	<p>The takings from accommodation divided by the total number of guest nights for the survey period,</p> $Avg.TakingsPerAvailableRoomNight(\$) = \frac{TakingsFromAccommodation}{(GuestRooms) * (No.OfDaysInThePeriod)}$
Average takings per room night occupied	<p>The takings from accommodation divided by the total number of room nights occupied for the survey period.</p>
Bed occupancy rate	<p>The bed occupancy rate represents bed occupancy expressed as a percentage of total capacity available during the survey period,</p> $BedOccupancyRate (\%) = \frac{GuestNightsOccupied}{(BedSpaces) * (No.OfDaysInThePeriod)} * 100$
Bed spaces	<p>Three-quarter beds are counted as one bed space; double beds as two bed spaces. Cots are excluded.</p>
Capacity	<p>Capacity in terms of guest rooms/units, visitor hostel bed spaces, holiday units or caravan park sites is the maximum number available to accommodate paying guests during the survey period. Capacity closed temporarily for seasonal reasons is included.</p>
Caravan park sites	<p>Includes on-site vans, other powered sites, unpowered sites and cabins.</p>
Establishments	<p>The number of hotels, motels and guest houses and serviced apartments, caravan parks and visitor hostels within the scope of the survey which operated for any part of the survey period, or which closed temporarily for the quarter for seasonal reasons.</p>
Guest arrivals	<p>The total number of paying guests counted only on the first night they stayed at the accommodation establishment during the survey period.</p>
Guest nights	<p>The total number of paying guests counted on each night they stayed at the accommodation establishment during the survey period.</p>
Guest rooms	<p>The maximum number of rooms available at each establishment during the survey period for accommodating short-term paying guests. Units and apartments within serviced apartments are treated as rooms in these survey results.</p>
Letting entities	<p>For holiday flats, units and houses, the number of owners, managers or real estate agents within the scope of the survey who operated for any part of the survey period.</p>
Long-term caravan parks	<p>Caravan parks where the majority of paying guests occupied sites for periods of more than two months.</p>
Occupancy	<p>Occupancy in terms of room nights, unit nights or site nights occupied refers to the total number of nights each guest room/unit or caravan park site was occupied during the survey period.</p> <p>Occupancy in terms of guest nights refers to the total number of paying guests counted on each night they stayed at the accommodation establishment during the survey period.</p>
Other sites permanently reserved	<p>The total number of powered and unpowered sites, on-site vans and cabins, etc. continuously let for two months or more of the survey period to tenants who occupy the sites only on a casual or sporadic basis.</p>
Persons employed	<p>The total number of persons working at each accommodation establishment at the end of the survey period (including working proprietors and those working on other than accommodation activities).</p>

GLOSSARY *continued*

Room nights available	The number of guest rooms/units available multiplied by the number of days for which they were available during the survey period. For establishments closing (other than for seasonal reasons) or opening during this period, operating periods only are included.
Room nights occupied	The number of nights each guest room/unit was occupied by a paying guest during the survey period.
Room occupancy rate	<p>The room occupancy rate represents room occupancy expressed as a percentage of total capacity available during the survey period,</p> $\text{RoomOccupancyRate (\%)} = \frac{\text{RoomNightsOccupied}}{(\text{GuestRooms}) * (\text{No.OfDaysInThePeriod})} * 100$ <p>providing that, for establishments closing (other than for seasonal reasons) or opening during the survey period, the denominator of the above expression includes only operating periods.</p>
Short-term caravan parks	Caravan parks where the majority of paying guests occupy sites for periods of less than two months.
Site nights available	The total number of nights each caravan park site was occupied during the survey period.
Sites occupied by long-term guests	The total number of sites, etc. occupied at the end of the survey period by guests who have stayed continuously for 2 months or more.
Star grading	The grading of hotels, motels and guest houses with facilities and serviced apartments is based on the classification system owned by AAA Tourism Pty Ltd. The gradings are allocated according to a points system based on the amenities and facilities available to guests. Details of the grading scheme are contained in the publication <i>Accommodation Guide</i> published by AAA Tourism Pty Ltd for each of the individual Australian Motoring Organisations. For the purpose of classifying establishments to a star grading in this publication, 'half' star gradings are ignored (e.g. a two and a half star grading has been shown as two star).
Takings from accommodation	<p>Since 1 July 2000, takings from accommodation include gross revenue from the provision of accommodation, including GST. Takings from meals are excluded. In cases where takings from accommodation data cannot be provided inclusive of GST the amount of GST payable is estimated and the data revised accordingly.</p> <p>Takings from accommodation for each month generally represent the takings received during that month. Where payments are received in advance of, or after the provision of accommodation to guests, the monthly figure for takings from accommodation may not necessarily bear a direct relationship to the number of guests accommodated during the month.</p>
Unit lettings	The total number of times a holiday flat, unit or house was occupied by a new tenant, counted only on the first night it was occupied by the new tenant.
Unit nights	The total number of nights each holiday flat, unit or house was occupied during the survey period.

FOR MORE INFORMATION . . .

- INTERNET* **www.abs.gov.au** the ABS web site is the best place to start for access to summary data from our latest publications, information about the ABS, advice about upcoming releases, our catalogue, and Australia Now—a statistical profile.
- LIBRARY* A range of ABS publications is available from public and tertiary libraries Australia-wide. Contact your nearest library to determine whether it has the ABS statistics you require, or visit our web site for a list of libraries.
- CPI INFOLINE* For current and historical Consumer Price Index data, call 1902 981 074 (call cost 77c per minute).
- DIAL-A-STATISTIC* For the latest figures for National Accounts, Balance of Payments, Labour Force, Average Weekly Earnings, Estimated Resident Population and the Consumer Price Index call 1900 986 400 (call cost 77c per minute).

INFORMATION SERVICE

Data already published that can be provided within five minutes will be free of charge. Our information consultants can also help you to access the full range of ABS information—ABS user pays services can be tailored to your needs, time frame and budget. Publications may be purchased. Specialists are on hand to help you with analytical or methodological advice.

- PHONE* 1300 135 070
- EMAIL* client.services@abs.gov.au
- FAX* 1300 135 211
- POST* Client Services, ABS, GPO Box 796, Sydney NSW 2001

WHY NOT SUBSCRIBE?

ABS subscription services provide regular, convenient and prompt deliveries of ABS publications and products as they are released. Email delivery of monthly and quarterly publications is available.

- PHONE* 1300 366 323
- EMAIL* subscriptions@abs.gov.au
- FAX* 03 9615 7848
- POST* Subscription Services, ABS, GPO Box 2796Y, Melbourne Vic 3001



2863500009038

ISSN 1031 0770

RRP \$23.00